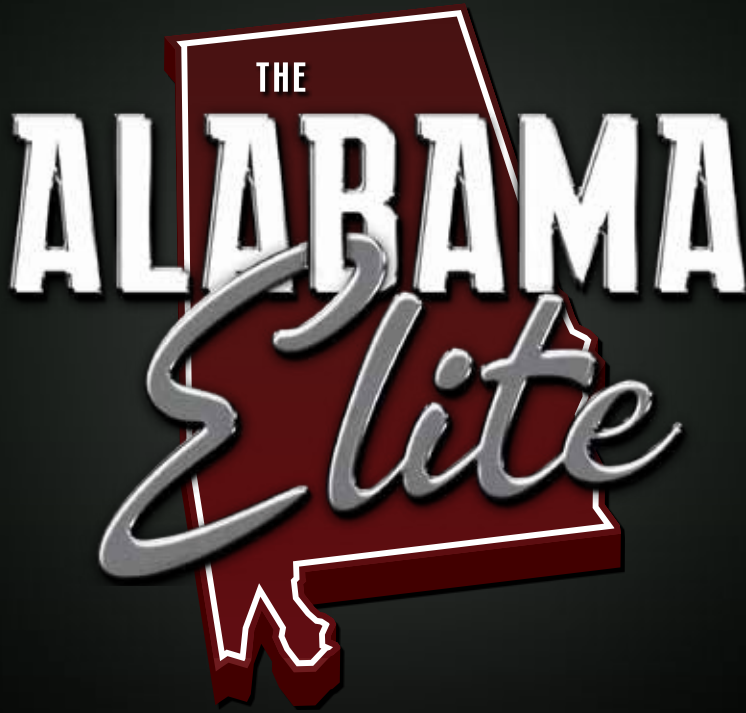


THE
ALABAMA
Elite

MAY 16
2026

LETOHATCHEE
ALABAMA

CHAROLAIS BULLS, FEMALES & EMBRYOS



CHAROLAIS SALE

BULLS • FEMALES • EMBRYOS



SATURDAY, MAY 16
SALE AT 1:00 PM

LETOHATCHEE, AL
MID-STATE STOCKYARDS

SALE SCHEDULE

FRIDAY, MAY 15

All cattle arrive and in place, available for viewing all day.

SATURDAY, MAY 16

8:00 AM Cattle available for viewing.

Noon Lunch courtesy of Alabama Elite.

1:00 PM Sale starts promptly.

SALE LOCATION

MID-STATE STOCKYARDS, LLP

8415 State Hwy 97, Letohatchee, AL 36047 (Exit 151 on I-65)

Phone: 1-877-334-5229

SALE HEADQUARTERS

FAIRFIELD INN & SUITES MONTGOMERY AIRPORT SOUTH

7560 Mobile Highway, Montgomery, AL, 36105

(334) 281-6882 • \$144 + tax

SALE CONTACTS

MANAGER

Dennis Adams(979) 229-4472

SPONSORS

Bobby Keahey(251) 275-3102

Chad Bradford(334) 830-5410

David Downey(334) 595-3956

REPRESENTATIVES

Isaac Hughes, Charolais Journal.(662) 660-3164

AUCTIONEER

Billy Younkin.334-313-3542

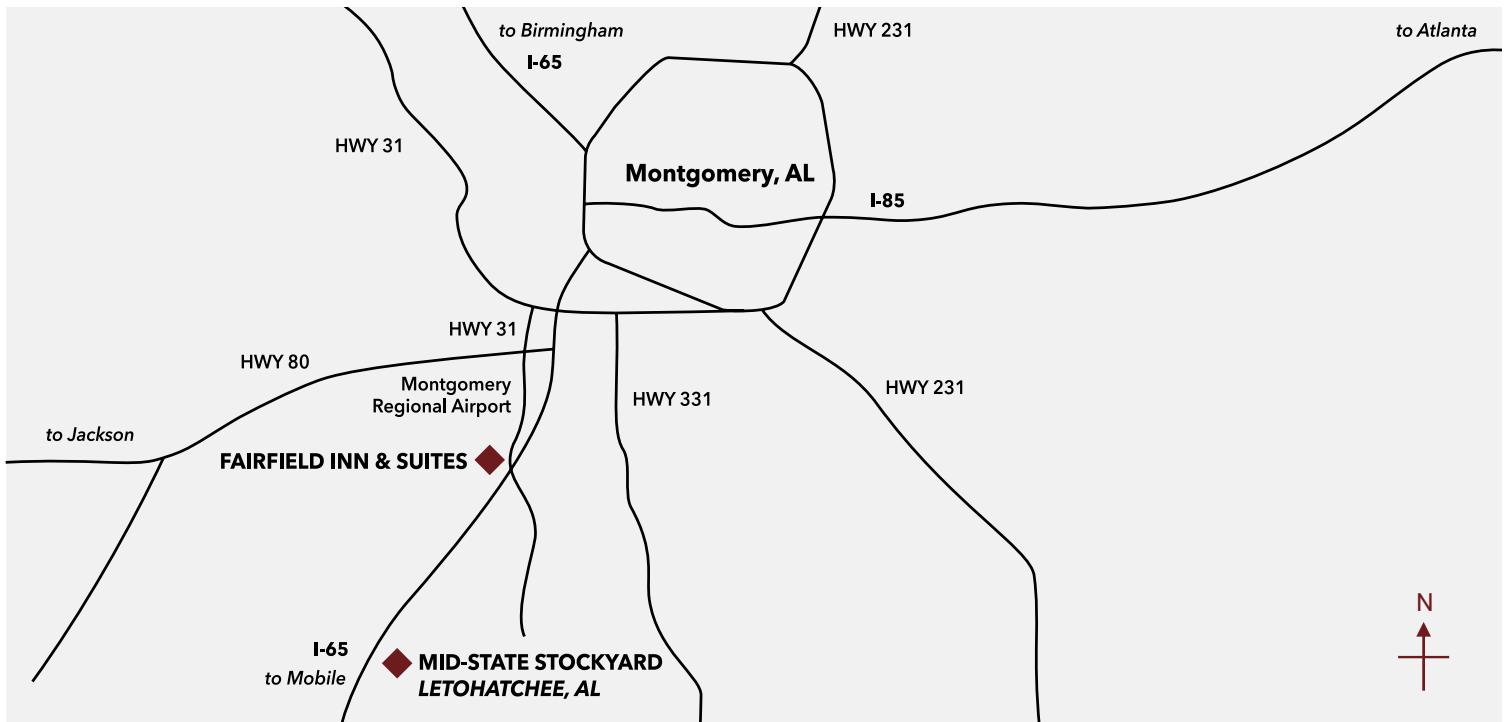


DENNIS ADAMS

(979) 229-4472

outfrontcattle@gmail.com • OutfrontCattle.com

P.O. Box 1879 • Lampasas, TX 76550



HEALTH

All cattle selling of test age will be tested for Brucellosis & T. B. within 30 days of sale or originate from a Certified and/or Accredited Herd or Free State. A proper Interstate health certificate will be furnished. All females selling as pregnant will be pregnancy tested by vet and called accordingly. All bulls, of age, will be fertility tested satisfactory and will be Trichomoniasis tested free. PA tests available will be noted.

TERMS & CONDITIONS

All sales are cash or check and settlement should be made upon conclusion of the sale. Cattle will not be released until settlement is made. Please make checks to OUTFRONT CATTLE Custodial. This sale is conducted under standard sale conditions and a copy is available at the settlement desk or by written request.

BIDDING

If you are unable to attend, you may phone your bid into the sale manager or AICA fieldman, and they will bid for you, in strict confidence. For details or more information, please call the sale manager. Online bidding is also available through DVAuction.com.

TRUCKING

A special trucking arrangement has been made if arranged by the Sale Manager. Please contact for details. Rates for local hauls are also available at reasonable prices.

SHIPPING

Buyers are responsible for all shipping and handling fees for embryos & semen and any signing fees on sires.

INSURANCE

Will be available at the settlement desk.

PERSONAL SAFETY

You attend at your own risk and Outfront Cattle, Mid-States Stockyards, LLP and the sale sponsors are not responsible for any accidents or exposures to Covid 19.

VIEW/BID LIVE ON THE INTERNET
LIVE ON THE INTERNET. LIVE AUDIO. LIVE VIDEO. BIDDING.

DVAuction
Broadcasting Real-Time Auctions

HTTP://WWW.DVAUCTION.COM
TECH SUPPORT: 402-316-5460

Welcome to the 3rd Alabama Elite Charolais Sale!

This sale is growing into a major collection of quality consignments and consignors! The goal has been to increase the sale in quality and numbers. Also to provide breeders in the south a “go-to” place for selling and buying Quality Charolais cattle, embryos, and semen. This has been designed to provide cattle that work in the fields and grasslands without pampering that return a profit each year with minimum requirements for the owner. The cattle must be as problem free as possible, fertile, productive, prolific, and efficient as possible. Yet be of such quality, proven bloodlines, and of the same goals that require purebred breeders to maintain good records of production. They must solidify genetics to be consistent and continue to increase in scope for the best desirable product available in an efficient manner!

The breeders selling here are working to obtain the best Charolais for you to invest in profitably. They value your time, effort, and resources so you are satisfied each year to obtain your genetics from this sale. They certainly enjoy your friendship and the chance to visit with you and your family and the requirements of your operation. It is an event that caters to servicing your business.

We hope to see you May 16th and evaluate a tremendous set of bulls, females, embryos, and semen. I think you will appreciate the effort these cattle people have made to earn your business. And they are looking for continued business by offering their best! Not just a one-time sale! We will have DV Auctions available for you to watch/bid on cattle. Please contact them several days prior to the sale to set up your account with them.

Please give us a call if we can check out certain lots for you prior to the sale. I will arrive on Thursday and be able to view the cattle Friday and respond to any inquiries. Thank you for your consideration and I hope you can join us.

Best regards,

Dennis Adams

SALE CONSIGNORS

ARLITT RANCH 210-287-8100
Bill & Raye Arlitt • Poteet, TX

BRADFORD AGRICULTURE..... 334-830-5410
Chad Bradford • Thomasville, AL

CLAYSTRONG GENETIC ENTERPRISES..... 717-830-0770
Clayton Armstrong • Mercersburg, PA

DAL-DAV CHAROLAIS..... 334-595-3756
David Downey • Prattville, AL

DESCO CHAROLAIS..... 717-729-6453
Daren Statler • Greencastle, PA

EVANS CHAROLAIS..... 325-647-9039
Rick & Cindy Evans • Early, TX

FARAWAY FARMS..... 703-362-0828
John Dellinger • Vale, NC

FOUR J FARMS..... 731-608-4015
Edward Jones • Finger, TN

JFS RANCH..... 903-790-5081
Kelly & Patty Stretcher • Dayton, TX

RODGERS BAR HR 601-765-7751
Doug Rodgers • Collins, MS

HUDSON HINES..... 251-564-1457
Hudson Hines • Beatrice, AL

KEAHEY CHAROLAIS..... 251-275-3102
Bobby Keahey • Grove Hill, AL

Thank You TO OUR SALE SPONSORS



Mary Margaret & Chad Bradford



Keahey Family



Downey Family

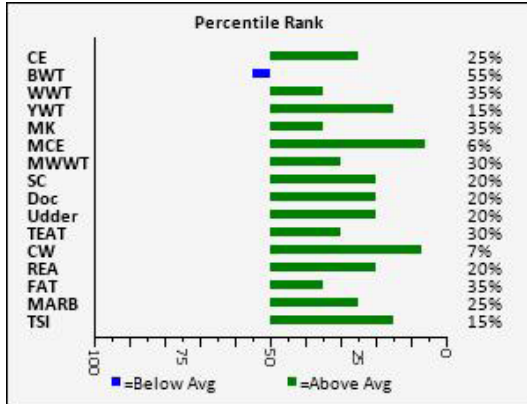
RDK SIR SAMSON 037 P



M932561 | K037 | 1/21/2020 | POLLED | BWT: 84 | WWT: 852

SIRE: RDK SAMSON 523P M856646

DAM: DESCO MS SUNDANCE 615 P ET F1236243



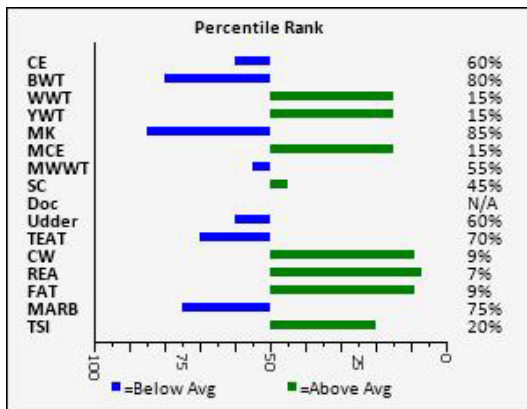
RDK SIR SAMSON 037 P

SF SAMSON 924P

M936810 | SF924 | 10/7/2019 | POLLED | BWT: 88 | WWT: 783

SIRE: RDK SAMSON 523P M856646

DAM: PJ SUSIE 937 P F1098064



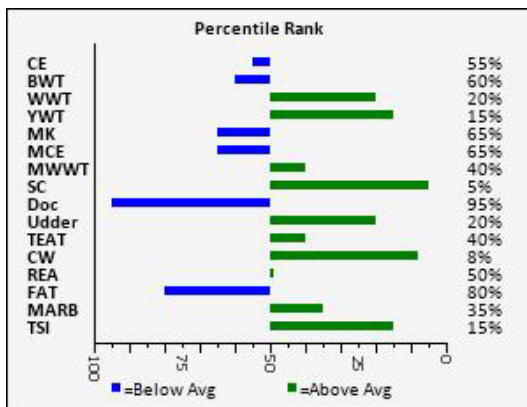
SF SAMSON 924 P

RDK JEFFERSON 504P

M1005867 | K504 | 9/30/2024 | POLLED | BWT: 94 | WWT: 766

SIRE: JMAR JEFFERSON 8M11 M951993

DAM: DESCO MS NEW STANDARD 908 EF1285412



RDK JEFFERSON 504P



RDK SAMSON 523P

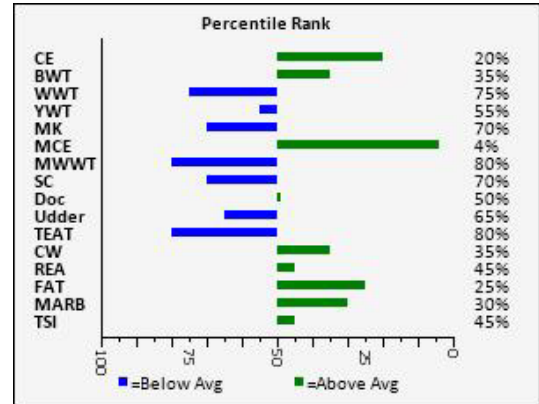
RDK SAMSON 523P



M856646 | 523P | 12/28/2014 | POLLED | BWT: 83 | WWT: 746

SIRE: RDK SAMSON 815 P M756968

DAM: RDK MARY T 503 P F1021026



WCR RANGER 115 P

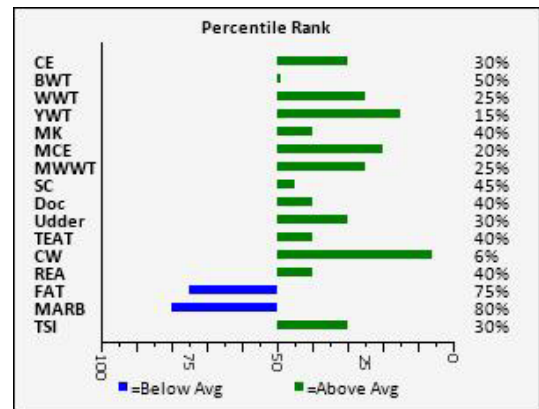
WCR RANGER 115 P



M958744 | 115 | 1/27/2021 | POLLED | BWT: 82 | WWT: 713

SIRE: DC/CRJ TANK E108 P M905524

DAM: WCR MS COUNTY LINE 978 P F1278563



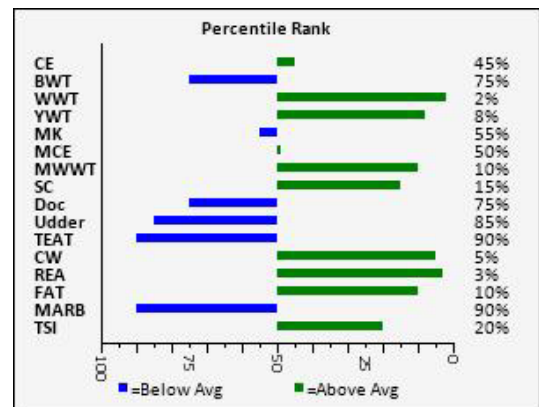
DC/CJC SAGE K1175

DC/CJC SAGE K1175

M982947 | K1175 | 2/25/2022 | POLLED | BWT: 94 | WWT: 812

SIRE: DC/MD SHARKSON H1359 M952292

DAM: DC/CJC MS CUBAN F3012 F1281323



SELLING 2 CONVENTIONAL EMBRYOS
BJR TANKFULL K92 P
X FINK VANITY 7548 3877 BF

CONSIGNED BY EVANS CHAROLAIS

DC/CRJ TANK E108 P
BJR TANKFULL K92 P M984205
 ABRJ MISS LEDGER 6119 P
 ONE PENNY BLANCO FLASH 6424
FINK VANITY 7548 3877 BF EF1256134
 FINK VANITY 3877 0293 GS
 BHD PERSEUS B65 P
 CRJ MS ZYLEN C1587
 LT LEDGER 0332 P
 ABRJ MISS NO DOUBT 278 P
 HCR FLASH 5074 POLLED
 DOUBLE-H BOBSY 424P
 FINK GOLD STANDARD 0153
 FINK VANITY 0293 7778 BG

CE	BW	WW	YW	MILK	MCE	MTL	SC	CW	REA	FAT	MARB	TSI
10.5	-0.05	72	141	30	9.4	66	1.2	44	0.98	-0.001	0.43	317

Donating 2-Conventional Embryos from mating of BJR Tankful K92P x Fink Vanity 7548 3877 BF. 100% of sale proceeds are donated to the Cattle for Christ International Fund. Tankfull ranks in top 1% for TSI (344), top 3% Marb, 1% CW, 9% REA, 8% WW, 2% YW, 6% Milk, and 2% MTL for incredible numbers, and is PAF. Vanity ranks in the top 1% Marb, 7% TSI, 5% REA, and is HOP and PAF. See lot 3 for her contribution to success! Proven Genetics always produces profitable results!



FINK VANITY 7548 3877 BF
 DONOR DAM OF LOT 1

2 CHOICE OF FLUSH

CONSIGNED BY CLAYSTRONG GENETIC ENTERPRISES

Donating Choice of a Flush in any owned Claystrong Genetics Donors. Just a few include, Fink Lady 9314 3821 GS, (\$58,000), Fink Miss Lady 1566 6322 GS, LCC Miss Lady 0308 653 BF, Fink Lady 1560 3821 GS, MF Miss Lady 5778 023 FL, or any owned Donor. Buyer pays all flushing costs, semen, and shipping expenses. These have been some of the high selling cows in Fink's sales and have produced some of the high selling progeny in those same sales. 100% of sale proceeds are donated to the Cattle for Christ International Fund.



FINK LADY 9314 3821 GS
 EXAMPLE DONOR COW IN CLAYSTRONG GENETIC ENTERPRISES HERD



100% of proceeds from Lot 1 will be donated to the Cattle for Christ International Inc organization. Once again, Desco Charolais, Daren Statler, is donating to this very worthy endeavor to help his fellow man to success for food production and life sustainability! Daren has spent time, resources, and traveled around the world to help others in need! This is a great mission in life. This organization works to import donated cattle and also training to more poverty stressed areas of the world to improve their Agriculture so they can be more successful! It's teaching them "how to fish" instead of giving them fish! Daren reports it's quite an experience to travel and share with other cattlemen from other areas of the world!

All proceeds from Lot 2 will also be donated to the Cattle for Christ International Inc organization. This is Clayton Armstrong's first year consigning in the Alabama Elite Sale, and he is donating an amazing gift to this organization. Our sincere thanks to Claystrong Genetic Enterprises.



DESCO MASTER CHEF 503
SELLS AS LOT 3

3

DESCO MASTER CHEF 503

M1009578 | 503 | 2/1/2025 | SCURS | BWT: 71 | WWT: 667

CONSIGNED BY DESCO CHAROLAIS

ELDER'S BLACKJACK 788B
WCR MASTER CHIEF 037 P M939613
WCR MS PRIME CUT 852 P

PLEASANT DAWN CHISUM 216A
DESCO-DC VANITY 325 P ET EF1340924
FINK VANITY 7548 3877 BF

GERRARD PASTOR 35Z
SVY STARSTRUCK 8X
WCR SIR PRIME CUT 637 ET P
WCR MS KINGSBURY 684 P
EATONS BIG BUD 10402 POLLED
PLESANT DAWN MAGGIE 316X
ONE PENNY BLANCO FLASH 6424
FINK VANITY 3877 0293 GS

CE	BW	WW	YW	MILK	MCE	MTL	SC	CW	REA	FAT	MARB	TSI
12.9	-3.4	68	114	33	8.4	67	1.2	34	1.19	-0.023	0.2	301

Selling Full Interest and Full Possession. Fertility tested. A calving ease sire with plenty of carcass ability and combined with superb muscling to increase growth and performance. Excellent WWt, 667 and YWt 1248 with a 3.55 IMF to exhibit complete evidence of his ability. His first-calf dam is out of a featured donor, Vanity 7548, that is HOP and has 68 progenies recorded with AICA. Chef ranks in the top 2% for REA, 35% Marb, and 6% TSI (301) for EPDs.



WCR MASTER CHIEF 037 P
SELLS AS LOT 4

4

DESCO CHECKMATE 502 P

M1009577 | 502 | 1/29/2025 | POLLED | BWT: 92 | WWT: 532

CONSIGNED BY DESCO CHAROLAIS

ELDER'S BLACKJACK 788B
WCR MASTER CHIEF 037 P M939613
WCR MS PRIME CUT 852 P

FTJ MONTICELLO 1806
DESCO ABBY 309 PP ET EF1343094
EC LOCKLYN 865 PLD

GERRARD PASTOR 35Z
SVY STARSTRUCK 8X
WCR SIR PRIME CUT 637 ET P
WCR MS KINGSBURY 684 P
VPI FREE LUNCH 708T
FTJ LTRB905 LTBV SHANDY1527
ACE-ORR LOCK N LOAD 243P
EC DESTINY 138 PLD

CE	BW	WW	YW	MILK	MCE	MTL	SC	CW	REA	FAT	MARB	TSI
6.8	1.3	78	138	32	5.9	71	1.2	43	0.97	0.021	0.29	300

Selling Full Interest and Full Possession. Fertility tested. With Monticello and Lock N Load in pedigree you've stacked the Marbling ability in this pedigree! EPDs rank 502 in the top 9% WW, 15% YW and Milk, 6% MTL, 7% CW, 15% REA and Marb, and 7% TSI, (300). Very impressive numbers along the the known calving ease of Master Chief makes this an ideal purchase for Pounds Pay!



LT BLUE VALUE 7903 ET
SIRE OF LOT 5

5

DESCO BANDWAGON 512 P/S ET

EM1022467 | 512 | 4/26/2025 | SCURS | BWT: 112 | WWT: 768

CONSIGNED BY DESCO CHAROLAIS

LT BLUEGRASS 4017 P
LT BLUE VALUE 7903 ET EM745516
LT UNLIMITED MAID 7184 P

EATONS PORTION 40011 POLLED
EATONS MISS DAVIDELL 81268 P F1277034
EATONS MISS DAVIDELL 50779

LT ASSERTION 1277 P
LT PEARL'S BREEZE 2236 P
LT UNLIMITED DUKE 1172 P
LT UNLIMITED LASS2156P
EATONS PORTION 11523
EATONS MISS EGLY 20976 PLD
EATONS STRYKER 20428 POLLED
EATONS DAVIDELL 6822

CE	BW	WW	YW	MILK	MCE	MTL	SC	CW	REA	FAT	MARB	TSI
9.7	1.1	71	120	36	14	71	1	22	0.53	0.035	0.25	255

Selling Full Interest and Full Possession. Fertility tested. An exciting maternal brother to the \$18,500 Desco Buckshot purchased by Select Sires! This cow family line is packed with performance and maternal excellence. Blue Value is well documented for producing superior females! He is ranked in the top 5% for Milk and MTL EPDs, 20% Marb, and had a WWt of 768 lbs.

6

PC REMEDY 490

PAF

M1009991 | 490 | 9/5/2024 | POLLED | BWT: 88 | WWT: 883

CONSIGNED BY HUDSON HINES

LT RUSHMORE 8060 PLD

LT RIO BRAVO 3181 P

LT BRENDA'S EASE 3055PLD

M6 BELLS & WHISTLES 258 P

M6 MS 5078 MARK 635 PLD ET

LT RIO BRAVO 3181 P

M6 MS GRID MAKER 2175 ET

M6 COOL REP 8108 ET

M6 0383 GERMAINE 8163 P ET

M6 REMEDY 1803 ET

EM920268

M6/ROR MS JEWEL'S BELL 556 P

M6 NEW STANDARD 842 P ET

PC MS LADY EASE 952 P ET

EF1306845

M6 COOL GERMAINE 1145 P ET

CE	BW	WW	YW	MILK	MCE	MTL	SC	CW	REA	FAT	MARB	TSI
8.9	1.8	74	142	36	4.8	73	1.9	40	0.99	0.033	0.08	288

Selling Full Interest and Full Possession. Fertility tested. Exquisite pedigree tracing to the M6 Cool Germaine 1145, perhaps one of the most dominate influencers in the breed! 952 has produced 7 progenies and is a full sib to many highly successful donors and herd sires! Remedy is in the top 20% WW, 8% YW, 5% Milk, 4% MTL, 10% CW, 9% REA, and 20% TSI (288). Big, stout, long-bodied bull, smooth made with impeccable pedigree and conformation!



PC REMEDY 490
SELLS AS LOT 6

7

OC OWEN 450M

PAF

EM1011381 | 450M | 11/23/2024 | POLLED | BWT: 88

CONSIGNED BY HUDSON HINES

M6 NEW STANDARD 842 P ET

LT RIO BRAVO 3181 P

M6 MS GRID MAKER 2175 ET

M6 COOL REP 8108 ET

M6 0383 GERMAINE 8163 P ET

M6 COOL DUDE 6463 P ET

SR LADY EASE 914 ET

ABC LEADER

LHD MS FERNANDO Z543

M6 PINNACLE 712 PLD ET

EM899728

M6 COOL GERMAINE 1145 P ET

M6 COOL REP 8108 ET

PC COOL LADY 156

F1151768

PC MS FERNANDO 556 PLD ET

CE	BW	WW	YW	MILK	MCE	MTL	SC	CW	REA	FAT	MARB	TSI
15.3	-2.1	78	137	24	12.9	63	1.1	36	1.09	0.013	0.16	295

Selling Full Interest and Full Possession. Fertility tested. A fantastic muscle powered bull with lots of volume and depth for easy fleshing a great carcass ability! Top 20% CW, 4% REA, 45% Marb, and 10% TSI (295) EPDs. Also rates well for growth, top 10% WW, 15% YW, and 25% MTL EPDs. Prolific dam has 22 progenies, granddam has 9, and the Z543 was one of the 4 original selections by F&F from DeBrycker that had 11 progenies and produced several Donors!



OC OWEN 450M
SELLS AS LOT 7

8

OC OWEN 552N

PAF

EM1011380 | 552N | 1/19/2025 | POLLED | BWT: 88

CONSIGNED BY HUDSON HINES

LT COUNTDOWN 9712 PLD

BROBERG'S RSOURCE D20

LT MADELINE 6113 PLD

M6 NEW STANDARD 842 P ET

M6 COOL GERMAINE 1145 P ET

M6 COOL DUDE 6463 P ET

SR LADY EASE 914 ET

ABC LEADER

LHD MS FERNANDO Z543

SVY HISTORIC 241K

EM965421

M6 MS NEW GERMAINE 484 P

M6 COOL REP 8108 ET

PC COOL LADY 156

F1151768

PC MS FERNANDO 556 PLD ET

CE	BW	WW	YW	MILK	MCE	MTL	SC	CW	REA	FAT	MARB	TSI
13.2	-1	86	153	28	13.3	70	1.6	43	1.04	0.061	0.14	294

Selling Full Interest and Full Possession. Fertility tested. A maternal sib to Lot 7, this very smooth, skeletal correct sire is full of muscle and volume in a complete package! He ranks in the top 3% WW and YW, 35% Milk, 6% MTL, 7% for both CW & REA, and 15% TSI (294). Another great influence of the Germaine 1145 cow on the top side and the calving ease sire, Countdown. Cool Rep was one of the great performance sires at M6 Ranch!



OC OWEN 552N
SELLS AS LOT 8



FARAWAY NEUTRON 81N
SELLS AS LOT 9

9 FARAWAY NEUTRON 81N **PAF**

EM1009481 | 81N | 3/5/2025 | POLLED | BWT: 103 | WWT: 665
CONSIGNED BY FARAWAY FARMS

WCR SIR TRADITION 066
M6 GRID MAKER 104 PET EM633377
VCR MISS MAC IV 317

RBM FARGO Y111
DOUBLE-H 6100'S BEAUTY 008H ET EF1290253
M6 MS 761 NANCY 6100 P ET

WCR SIR TRADITION 4402
IDEAL 809 45 OF 25
WCR SIR FA MAC 2244
VCR MISS DUCHESS 113 PLD
SPARROWS FARGO 811U
HC RHINESTONE 5100
WCR SIR DUKE 761
M6 MS H45 NANCY 382 ET

CE	BW	WW	YW	MILK	MCE	MTL	SC	CW	REA	FAT	MARB	TSI
7.5	0.7	65	128	28	1.5	61	1.1	25	1.01	0.005	0.06	268

Selling Full Interest and Full Possession. Fertility tested. An own son of Grid Maker who has over 4500 progenies recorded with AICA. His daughters have been mainstays in the breed. Dam traces to the great M6 Nancy 6100 that not only topped M6 Sales, but offspring did as well! His dam, Beauty, was the high selling cow in Double-H Dispersal sale. NGC Checklist's dam is a full sib to Neutrong's dam. I purchased an embryo in the sale to obtain Neutrong!



FARAWAY DEFIANT 602N
SELLS AS LOT 10

10 FARAWAY DEFIANT 602N **PAF**

EM1009474 | 602N | 3/23/2025 | POLLED | BWT: 86 | WWT: 659
CONSIGNED BY FARAWAY FARMS

LT RIO BLANCO 1234 P
VPI FREE LUNCH 708T M736773
VPI MISS DUCHESS 404 P

NWMSU DOC SILVER 362 PLD
WR DUCHESS Y601 F1142887
WR DUCHESS W609

WCR PRIME CUT 764 PLD
LT PRAIRIE MAID 4054
WCR PRIME CUT 764 PLD
VCR MISS DUCHESS 703 PLD
\$\$ MONTANA SILVER
NWMSU DOLORES ET 0035
OAKDALE DUKE 9003P
WR UNLIMITED EASE 3005

CE	BW	WW	YW	MILK	MCE	MTL	SC	CW	REA	FAT	MARB	TSI
11.8	-2.6	67	128	25	10.3	58	1.7	33	0.38	0.051	0.45	279

Selling Full Interest and Full Possession. Fertility tested. PAF and HOP, from another embryo I purchased from Next Gen, this super Free Lunch son has all the credentials for success! His dam is also the dam of Select Sire's WR Travel Agent, and a sister is the dam of WR Foreman. We intend to collect some semen on this bull for use in our herd. This bull provides good numbers, carcass ability, and solid performance! Should be on everyone's list!



CB MISS MOLLY 301
SELLS AS LOT 11

11 CB MISS MOLLY 301

F1339391 | B301 | 8/22/2022 | POLLED | BWT: 56 | WWT: 488
CONSIGNED BY KEAHEY CHAROLAIS

RDK SAMSON 523P
RDK SIR SAMSON 037P M932561
DESCO MS SUNDANCE 615 P ET

RDK SIR DUKE 704P
DDC MOLLY BELLE H61 F1307693
RDK LEXI MARY BELL 925P

RDK SAMSON 815 P
RDK MARY T 503 P
LT SUNDANCE 2251 PLD
DESCO OD DUKE DUANNE 213 P
WCR SIR DUKE 0267
SF MISS BLUE BREEZE 417P
MF BAM 330 PLD
RDK MISS LEXI 231

CE	BW	WW	YW	MILK	MCE	MTL	SC	CW	REA	FAT	MARB	TSI
14.2	-1.6	65	120	27	13.9	59	1.1	28	0.71	-0.006	0.16	278

11A: Pld heifer calf # K641, born 1/29/26, bw 74, sired by SF Samson 924. PE from 1/29/26 to 2/15/26 to WCR Ranger 115 P, and PE from 3/9/26 to 5/16/26 to Heart-J Royal Range 1743, safe in calf. Great udder on this young, super producing cow. Sired by 037, or "Christmas" as we call him. His daughters are super producing females and calf raisers! Molly traces to Buck Compton's great Duke 0267 sire! Her calf is awesome and you will see a true pair that ensures success!

12 RDK ROSIE PRISE 405P

F1350025 | K405 | 11/6/2023 | POLLED | BWT: 83 | WWT: 683
 CONSIGNED BY KEAHEY CHAROLAIS

LHD CHOTEAU B1669 P
RDK SMOKESTER 1901 P ET EM922756
 SOUTHERN MAMIE 41547
 WCR SIR COUNTYLINE 551 P
RDK MS ABIGAIL ROSE 218P F1317817
 JRA SERIOUS MISS Z17

JDJ JUSTICE U319
 LHD MS CIGARSON T983
 M6 NEW STANDARD 842 P ET
 M6 MS GRID MAKER 5237PET
 WCR COUNTY LINE 3132 P
 WCR MS BIG BEN 318 P
 HEP SERIOUS BUSINESS 5ET
 KC MISS MAC 1010 POLLED

CE	BW	WW	YW	MILK	MCE	MTL	SC	CW	REA	FAT	MARB	TSI
9.4	1.3	68	121	25	9.6	59	1.5	19	0.68	0	0.17	257

12A: Polled heifer calf # K635, born 1/6/2026, bw 83, sired by CB Samson 419. PE from 1/29/26 to 2/15/26 to WCR Ranger 115 P, and PE from 3/9/26 to 5/16/26 to Heart-J Royal Range 1743, safe in calf. Her prolific dam has calved every year since a 2-year old, 11/23; 12/24; and 12/25. Lots of fertility in this cow family that traces back to Harold Pate's great Serious Business 5ET bull! This calf is a dandy and will be a great addition to any herd!

14 SF REBECCA JOAN 212P

RF715961 | SF212 | 1/2/2023 | POLLED | BWT: 73 | WWT: 627
 CONSIGNED BY KEAHEY CHAROLAIS

LT LEDGER 0332 P
SF LEDGER 531P M871016
 HEP MISS JOAN 2Y
 CC ALABAMA FLASH 826P
SF MISS REBECCA 215 P RF706879
 SF MISS MAGNUM 423 P TW

LT BLUEGRASS 4017 P
 LT BRENDA 6120 PLD
 HEP KING GRAZER 25A
 HEP MISS JOAN 97P
 MV MR FLASH 500 P
 MV MISS ALABAMA 355 P
 WCR SIR TRADIT 9913 ET P
 SF 19

CE	BW	WW	YW	MILK	MCE	MTL	SC	CW	REA	FAT	MARB	TSI
15.1	-2.7	60	111	21	14.6	51	0.7	20	0.53	0.025	0.15	257

14A: Polled heifer calf # K617, born 12/2/25, bw 66, sired by RDK Samson 037P, "Christmas"! PE from 1/29/26 to 2/15/26 to WCR Ranger 115 P, and PE from 3/9/26 to 5/16/26 to Heart-J Royal Range 1743, M958744, safe in calf. A calving ease female, Joan 212 weighed 73 at birth but weaned at 627 lbs, 101% ratio and a 1038 YW for 105% ratio. Milks well and puts everything into her fancy calf! Joan is a 15/16% Charolais but all her calves will be purebred!

16 CB MISS CHOTEAU 503

F1366247 | B503 | 10/9/2024 | POLLED | BWT: 67
 CONSIGNED BY KEAHEY CHAROLAIS

LHD CHOTEAU B1669 P
RDK SMOKESTER 1901 P ET EM922756
 SOUTHERN MAMIE 41547
 RDK SIR SAMSON 037P
CB LADY SAMSON 356 F1339377
 ORR'S MS NANCY 821P

JDJ JUSTICE U319
 LHD MS CIGARSON T983
 M6 NEW STANDARD 842 P ET
 M6 MS GRID MAKER 5237PET
 RDK SAMSON 523P
 DESCO MS SUNDANCE 615 P ET
 CCC WC RESOURCE 417 P
 ORR LADY NANCY 364 ET

CE	BW	WW	YW	MILK	MCE	MTL	SC	CW	REA	FAT	MARB	TSI
14.3	-2	60	115	28	11.6	58	1.8	22	0.78	0.004	0.25	273

PE from 12/8/25 to 2/15/26 to WCR Ranger 115 P, and PE from 3/9/26 to 5/16/26 to Heart-J Royal Range 1743, M958744. One of the top heifers in the sale! She is deep bodied, long sided, excellent size and growth. Outstanding pedigree of proven genetics. LHD Choteau was the first bull LT Ranch bought from DeBruyckers that worked well in their herd and was also a partner with Domek in MT on the bull. She ranks in the top 20% for Marb!!

13 RDK ASHTON PRISE 635P

F1378302 | K635 | 1/6/2026 | POLLED | BWT: 83
 CONSIGNED BY KEAHEY CHAROLAIS

RDK SAMSON 523P
CB SAMSON 419 M993897
 BMD VENTURES JOY 021
 RDK SMOKESTER 1901 P ET
RDK ROSIE PRISE 405P F1350025
 RDK MS ABIGAIL ROSE 218P

RDK SAMSON 815 P
 RDK MARY T 503 P
 WELCOME GROVE VISTOR
 BC GRIDMAKER'S MISS MAC 9513
 LHD CHOTEAU B1669 P
 SOUTHERN MAMIE 41547
 WCR SIR COUNTYLINE 551 P
 JRA SERIOUS MISS Z17

CE	BW	WW	YW	MILK	MCE	MTL	SC	CW	REA	FAT	MARB	TSI
10.7	0.4	64	123	24	10.1	57	1.2	21	0.65	-0.001	0.13	260

Sells Open. Her dam sells as Lot 12 so you can evaluate the whole family! Going back to the Smokester 1901 insures milking ability and muscle. Her sire, Samson 419 is a paternal sib to RDK Sir Samson 037P, Christmas, both being sired by RDK Samson 523! Her granddam is a daughter of our Wienk bull, Countyline 551 that is doing such a great job. The more of the Samson line you observe, the more impressed you become. Performance cattle for cattle people.

15 RDK MS DELILAH ROSE 617P

F1378162 | K617 | 12/2/2025 | POLLED | BWT: 62
 CONSIGNED BY KEAHEY CHAROLAIS

RDK SAMSON 523P
RDK SIR SAMSON 037P M932561
 DESCO MS SUNDANCE 615 P ET
 SF LEDGER 531P
SF REBECCA JOAN 212P RF715961
 SF MISS REBECCA 215 P

RDK SAMSON 815 P
 RDK MARY T 503 P
 LT SUNDANCE 2251 PLD
 DESCO OD DUKE DUANNE 213 P
 LT LEDGER 0332 P
 HEP MISS JOAN 2Y
 CC ALABAMA FLASH 826P
 SF MISS MAGNUM 423 P TW

CE	BW	WW	YW	MILK	MCE	MTL	SC	CW	REA	FAT	MARB	TSI
16.5	-3.1	64	125	24	15.4	57	1.1	28	0.68	0.01	0.17	278

Sells Open. Her dam sells as Lot 14 so again, you can evaluate the family! Samson 037 ancestry includes one of Desco's top donor cows, OD Duke Duanne 213P. Whose genetics can be found in lots of herds with her 55 progenies produced. (Summerford, Myers, Harmon, Cross, and Nebkota Genetics to mention a few). She was sired by Oakdale Duke 9003 out of HBR Lady Cannon 847. Stacked genetics of time-proven ability in the breed!



CB MISS CHOTEAU 503
 SELLS AS LOT 16



RDk PAMELA CATE 509P
SELLS AS LOT 17

17

RDk PAMELA CATE 509P

F1363059 | K509 | 11/12/2024 | POLLED | BWT: 76 | WWT: 758
CONSIGNED BY KEAHEY CHAROLAIS

WCR SIR PRIME CUT 637 ET P
WCR PRIMED 1132 P M959181
WCR MS TANK 9236 TW P

SF SIR AMOS 016P
RDk LADY ABIGAIL 327P F1335724
CC LADY CATE 124

WCR PRIME CUT 764 PLD
WCR MS DESIGN 201 P
DC/CRJ TANK E108 P
WCR MS COUNTY LINE 7300 P
WCR SIR COUNTYLINE 551 P
RDk PAM'S DELILAH 618P
CC SIR DUKE 300 P
CC MISS MAGGIE 134 P

CE	BW	WW	YW	MILK	MCE	MTL	SC	CW	REA	FAT	MARB	TSI
14.7	-1.1	68	123	28	10.7	62	1.1	29	0.57	0.024	0.07	268

Bred A-I on 2/9/26 to RDk Sir Samson 037P and PE from 3/2/26 to 5/16/26 to RDk Rufus 518P, M1005889. Rufus is a WCR Ranger 115 P Son out of a daughter of HBR Big Mack 662 P x Duke 914 breeding. Line bred to County Line, this very feminine heifer also displays good bone, volume, and capacity. Her length and correctness add to her value. A Samson calf will enhance an already high quality cow to an even higher degree with the calf!



RDk LEXI ROSE 525P
SELLS AS LOT 18

18

RDk LEXI ROSE 525P

F1363031 | K525 | 12/3/2024 | POLLED | BWT: 72 | WWT: 575
CONSIGNED BY KEAHEY CHAROLAIS

DC/CRJ TANK E108 P
WCR RANGER 115 P M958744
WCR MS COUNTY LINE 978 P

RDk SAMSON 523P
SF LADY DELILAH 921P F1288144
SF LADY SUE 012 P

BHD PERSEUS B65 P
CRJ MS ZYLEN C1587
WCR COUNTY LINE 3132 P
WCR MS TRADITION 5155 P
RDk SAMSON 815 P
RDk MARYT 503 P
WCR SIR PAUL 5013P
CC MISS ANNE 033

CE	BW	WW	YW	MILK	MCE	MTL	SC	CW	REA	FAT	MARB	TSI
16.5	-3.2	58	116	25	14.1	53	0.9	28	0.65	0.004	0.05	274

Bred A-I on 2/9/26 to RDk Sir Samson 037P and PE from 3/2/26 to 5/16/26 to RDk Rufus 518P. A feminine heifer with extra size and scale. She shows extra performance with strong maternal ability! Her dam has a very enviable calving interval, C.I. 12/21; 1/23; 1/24; 12/24; and 11/25. That's fertility and profitability! Tank was one of the highest used A-I Sires in 2024. His numbers are a great asset along with consistent productivity.



RDk COUNTY ROSE 531P
SELLS AS LOT 19

19

RDk COUNTY ROSE 531P

F1363055 | K531 | 1/8/2025 | POLLED | BWT: 81 | WWT: 672
CONSIGNED BY KEAHEY CHAROLAIS

DC/CRJ TANK E108 P
WCR RANGER 115 P M958744
WCR MS COUNTY LINE 978 P

WCR SIR COUNTYLINE 551 P
RDk MS DELILAH ROSE 236P F1317818
RDk MISS DELILAH L 812P

BHD PERSEUS B65 P
CRJ MS ZYLEN C1587
WCR COUNTY LINE 3132 P
WCR MS TRADITION 5155 P
WCR COUNTY LINE 3132 P
WCR MS BIG BEN 318 P
RDk SAMSON 523P
JRA SERIOUS MISS Z17

CE	BW	WW	YW	MILK	MCE	MTL	SC	CW	REA	FAT	MARB	TSI
15.2	-1.8	72	130	24	13.4	61	1	30	0.65	0.01	0.04	272

Bred A-I on 2/9/26 to RDk Sir Samson 037P and PE from 3/2/26 to 5/16/26 to RDk Rufus 518P. This strong polled heifer displays abundant femininity and growth. She has additional frame and size that enabled Charolais to be the leader in performance. She is in the top 25% for both WW and YW, with emphasis on calving ease with a top 20% CE and still has the good WWt at 672 lbs for a 101% ratio. She has a top 45% TSI (272).

20 RDK MS VANITY 602P

F1378224 | K602 | 8/2/2025 | POLLED | BWT: 78 | WWT: 635
 CONSIGNED BY KEAHEY CHAROLAIS

ELDER'S BLACKJACK 788B
WCR MASTER CHIEF 037 P M939613
 WCR MS PRIME CUT 852 P

GERRARD PASTOR 35Z
 SVY STARSTRUCK 8X
 WCR SIR PRIME CUT 637 ET P
 WCR MS KINGSBURY 684 P
 EATONS BIG BUD 10402 POLLED
 PLESANT DAWN MAGGIE 316X
 ONE PENNY BLANCO FLASH 6424
 FINK VANITY 3877 0293 GS

PLEASANT DAWN CHISUM 216A
DESCO-DC VANITY 326 P ET EF1340923
 FINK VANITY 7548 3877 BF

CE	BW	WW	YW	MILK	MCE	MTL	SC	CW	REA	FAT	MARB	TSI
8.7	-1.5	73	131	26	6.8	62	1.5	36	0.99	-0.017	0.27	297

Sells Open. Her dam, 326 is a full sib to the dam of Lot 3 bull making Vanity 602, a full blood sib to lot 3. 602 is being halter-broke and is the youngest lot in the sale. (except for calves at side) She displays the same great phenotype and style with plenty of time to fill out and mature into the same powerful individual that of lot 3. Her numbers rank her in the top 20% for WW and YW, 25% MTL, 20% CW, 9% REA, 15% Marb, and 9% TSI (297) Tremendous potential!



RDK MS VANITY 602P
 SELLS AS LOT 20

21 REAVES MS NANCY G 2023

F1346273 | 2323 | 4/15/2023 | POLLED | BWT: 67
 CONSIGNED BY KEAHEY CHAROLAIS

DC/CRJ TANK E108 P
WCR GAMBLER 1167 P M959561
 WCR MS KINGSBURY 9258 P

BHD PERSEUS B65 P
 CRJ MS ZYLEN C1587
 WCR KINGSBURY 116 P
 WCR MS FIREWATER 5277 P
 LT RIO BRAVO 3181 P
 M6 MS GRID MAKER 2175 ET
 WCR SIR DUKE 761
 M6 MS H45 NANCY 382 ET

M6 NEW STANDARD 842 P ET
M6 MS NEW NANCY 277 P ET EF1166116
 M6 MS 761 NANCY 6100 P ET

CE	BW	WW	YW	MILK	MCE	MTL	SC	CW	REA	FAT	MARB	TSI
10.8	-0.9	59	117	36	6.3	65	1.2	28	0.55	0.017	0.19	271

21A: Outstanding bull calf that is being retained by Keahey's. PE from 12/8/25 to 2/15/26 to WCR Ranger 115 P, and PE from 3/9/26 to 5/16/26 to Heart-J Royal Range 1743, M958744. What a great female, and super producer as you can tell by her super stout bull calf. Her dam is owned by Whiting Charolais, WW and has topped many sales along with her progeny! The Nancy 6100 wrote many of the record selling offspring at M6! Gambler is HOP and PAF.



REAVES MS NANCY G 2023
 SELLS AS LOT 21

22 CB MISS CHOTEAU 406

F1349538 | B406 | 10/22/2023 | POLLED | BWT: 75 | WWT: 545
 CONSIGNED BY BRADFORD AGRICULTURE

LHD CHOTEAU B1669 P
RDK SMOKESTER 1901 P ET EM922756
 SOUTHERN MAMIE 41547

JDJ JUSTICE U319
 LHD MS CIGARSON T983
 M6 NEW STANDARD 842 P ET
 M6 MS GRID MAKER 5237PET
 LT RUSHMORE 8060 PLD
 LT ATHENA 1247
 MV 2070 DUKE-CIGAR 384
 RC MS SMOKIN DUKE 739

LT AFFINITY 6221 PLD
CB MISS AFFI 208 F1320220
 RC MS DUKE CIGAR 9051

CE	BW	WW	YW	MILK	MCE	MTL	SC	CW	REA	FAT	MARB	TSI
12.2	-1.3	64	109	29	8.1	61	1.6	15	0.62	0.003	0.21	254

PE from 1/31/26 to 3/6/26 to RDK Sir Samson 037P, and from 4/3/26 to 5/15/26 to SF Samson 924P. This long-necked, feminine young cow has plenty to offer for success. She ranks well for calving ease, top 35% WW, 25% Milk and MTL, and 20% for Marb! Affinity known for calving ease and great milking daughters. The Duke-Cigar 384 was an exciting bull calf at side of the Duke 914 cow out of the Lady Cigar 2070 that topped a Southern Connection Sale!



CB MISS CHOTEAU 406
 SELLS AS LOT 22



RE B2011 CORNERSTONE 210
SELLS AS LOT 23

23 RE B2011 CORNERSTONE 210 **PAF**

F1349600 | 210 | 10/4/2022 | POLLED | BWT: 92 | WWT: 705
CONSIGNED BY BRADFORD AGRICULTURE

WC MILESTONE 5223 P
RE CORNERSTONE 870 ET M950491
RE MS DUKE 34 ET

LHD CIGAR E46
JDJ MS CIGAR B2011 P ET EF1198275
JDJ MS SPUR R120

WC BENELLI 2134 P ET
WC LADY BLUE 0506 P
LHD CIGAR E46
CR MISS DUKE 172
LHD MR PERFECT Y416
LHD MS CLASSIC BELL X613
SSR MR SPUR 3328
JDJ MS SMOKESTER N290

CE	BW	WW	YW	MILK	MCE	MTL	SC	CW	REA	FAT	MARB	TSI
1.4	2.5	64	114	20	8.4	52		19	0.86	-0.016	-0.04	248

PE from 1/31/26 to 3/6/26 to RDK Sir Samson 037P, and from 4/3/26 to 5/15/26 to SF Samson 924P. Calved at 2-Yrs of age, 11/24 and 12/25 doing everything asked of her. Her illustrious dam has over 90 progenies recorded with AICA. She consistently produces over 25 embryos per flush! Same great designed structure as her dam, correct and excellent udder quality, and good disposition. One of the true highlights of the sale! Donor potential!!!



RCR MS TANK'S ILLUSION K902
SELLS AS LOT 24

24 RCR MS TANK'S ILLUSION K902 **PAF**

F1325120 | K902 | 1/21/2022 | POLLED | BWT: 70 | WWT: 579
CONSIGNED BY BRADFORD AGRICULTURE

BHD PERSEUS B65 P
DC/CRJ TANK E108 P M905524
CRJ MS ZYLEN C1587

RCR CHROME ILLUSION W655
RCR MS LEDGER'S ILLUSION H715 F1298448
RCR MS UNO LEDGE F521

BHD ZEUS X3041
BHD MS ZEN Z27
SM ZYLEN A849 S
BHD MS TRADEMARK Z38
CJC ILLUSION N111
RCR MS CHROME LEVI S345
KEYS UNO 271U
HF MS LEDGER AU454

CE	BW	WW	YW	MILK	MCE	MTL	SC	CW	REA	FAT	MARB	TSI
17.7	-3.3	63	127	35	16.2	66	0.3	39	0.75	-0.007	0.16	301

PE from 1/31/26 to 3/6/26 to DC/CJC Sage K1175 P, and from 4/3/26 to 5/15/26 to SF Samson 924P. Eye-catching appeal for quality and function, this top female excels in numbers. Top 4% CE, 15% BW, 15% YW, 6% Milk, 9% MTL, 6% CW, 35% REA and Marb, and 3% TSI (301). Dam was bred by Myron Runt, KS, that was very selective in his cattle. Tank has consistently succeeded in producing useful, productive cattle that met and exceeded many goals in herds!



CB MISS DOUBLE LEDGER 225 P
SELLS AS LOT 25

25 CB MISS DOUBLE LEDGER 225 P

F1319092 | B225 | 12/5/2021 | POLLED | BWT: 77 | WWT: 563
CONSIGNED BY BRADFORD AGRICULTURE

LT LEDGER 0332 P
SF LEDGER 531P M871016
HEP MISS JOAN 2Y

LT LEDGER 0332 P
SCF LADY LEDGER 1808B ET EF1270423
CF LADY CIGAR 812 PLD

LT BLUEGRASS 4017 P
LT BRENDA 6120 PLD
HEP KING GRAZER 25A
HEP MISS JOAN 97P
LT BLUEGRASS 4017 P
LT BRENDA 6120 PLD
LHD CIGAR E46
CF LADY DUKE 631 PLD

CE	BW	WW	YW	MILK	MCE	MTL	SC	CW	REA	FAT	MARB	TSI
11.6	-0.7	65	107	20	10.2	53	1	26	0.73	0.04	0.17	265

25A: Pld bull calf # 673, born 3/5/26, bw 89, sired by SF Samson 924P. PE from 1/31/26 to 3/6/26 to DC/CJC Sage K1175P and PE from 4/3/26 to 5/15/26 to SF Samson 924P. With her 3rd calf at side, 225 shows she can milk well and raise large performance calves. This is a half-brother half-sister mating that is outstanding when it works! Lady Cigar 812 was a Donor for Crews Farm, Blackwelder, and Stocum and produced 38 recorded calves. Good broodcow!

26

CB MISS TERRI LEDGER 249 P

F1319786 | B249 | 12/23/2021 | POLLED | BWT: 71 | WWT: 617

CONSIGNED BY BRADFORD AGRICULTURE

LT LEDGER 0332 P

LT BLUEGRASS 4017 P

LT BRENDA 6120 PLD

HEP KING GRAZER 25A

HEP MISS JOAN 97P

RDK SAMSON 318P

MCF QUEEN 7233 P

HEP SERIOUS BUSINESS 5ET

HEP MISS JOAN 46U

SF LEDGER 531P

M871016

HEP MISS JOAN 2Y

RDK SAMSON 318P

CB MISS TERRI JOAN 908P

F1269968

HEP MISS JOAN 9Z

CE	BW	WW	YW	MILK	MCE	MTL	SC	CW	REA	FAT	MARB	TSI
13.8	-1.5	75	120	19	12.1	56	0.9	33	0.82	0.021	0.12	280

26A: Pld heifer calf # 670, born 1/24/26, bw 84, sired by SF Samson 924P. PE from 1/31/26 to 3/6/26 to DC/CJC Sage K1175P and PE from 4/3/26 to 5/15/26 to SF Samson 924P. Some very strong foundational genetics with the Pate Charolais influence. She ranks in the top 8% WW, 25% YW, 15% CW, 25% REA, and 15% TSI (280). Light birth wt and then stout growth to a 617 WWT, 109% ration (12 contemp). Excellent udder quality and shape.



CB MISS TERRI LEDGER 249 P
SELLS AS LOT 26

27

FARAWAY MISS 115J

F1309733 | 115J | 9/16/2021 | POLLED | BWT: 87

CONSIGNED BY BRADFORD AGRICULTURE

SILVERSTREAM BRUMBY B89

PALGROVE XCEPT AI ET

SILVERSTREAM R75

IJOUFFLU

SILVERSTREAM IVEY 124

FARAWAY CHICO 4T PLD ET

M6IMS 225 SUPREME 0236ET

FARAWAY ROOSTER 417X

FARAWAY MISS W110 PLD ET

SILVERSTREAMEVOLUTION E

M889162

SILVERSTREAM GLOSSY S120

FARAWAY SHOSHONE 52Y

FARAWAY MISS 110C

F1201852

FARAWAY MISS 110Z

CE	BW	WW	YW	MILK	MCE	MTL	SC	CW	REA	FAT	MARB	TSI
7.3	1.5	56	99	14	5.6	42	0.2	19	0.8	-0.011	0.03	255

27A: Pld heifer calf # 656, born 12/16/25, bw 70, sired by SF Samson 924P. PE from 1/31/26 to 3/6/26 to DC/CJC Sage K1175P and PE from 4/3/26 to 5/15/26 to SF Samson 924P. Excellent calving record, 11/23; 12/24; and 12/25 showing the same great fertility of her dam, 110C that had 8 calves, 8/17; 5/19; 7/20; 9/21; 12/22; 11/23; 12/24; and 11/25. Her granddam, 110Z had 7 recorded calves. These are money makers!



SILVERSTREAMEVOLUTION E
SIRE OF LOT 27

28

SF REBECCA ABIGAIL 18P

F1318022 | SF18 | 10/6/2021 | POLLED | BWT: 82 | WWT: 590

CONSIGNED BY BRADFORD AGRICULTURE

WCR COUNTY LINE 3132 P

WCR KINGSBURY 116 P

WCR MS NO QUESTION 1237 P

WC BIG BEN 9036 P

WCR MS DESIGN 1148 P

MV MR FLASH 500 P

MV MISS ALABAMA 355 P

WCR SIR DESIGN 7268 P

CC MISS MOLLY 016P

WCR SIR COUNTYLINE 551 P

M862741

WCR MS BIG BEN 318 P

CC ALABAMA FLASH 826P

SF MISS FLASH 311 P

F1183805

SF MISS BECK 911 P

CE	BW	WW	YW	MILK	MCE	MTL	SC	CW	REA	FAT	MARB	TSI
12.7	-0.7	66	115	23	9.8	56	0.9	20	0.52	0.008	0.12	255

28A: Pld heifer calf # 667, born 1/10/26, bw 87, sired by SF Samson 924P. PE from 1/31/26 to 3/6/26 to DC/CJC Sage K1175P and PE from 4/3/26 to 5/15/26 to SF Samson 924P. Both her dam and granddam had 10 calves recorded with AICA, so you have at least 7 more to come with that scenario since Abigail has had 3 calves. A big, deep bodied cow with great milking ability sired by out prolific Wienk sire, Countyline 551 P.



SF REBECCA ABIGAIL 18P
SELLS AS LOT 28

29

TURNER K178 J163

F1324370 | J163 | 12/8/2021 | POLLED | BWT: 80 | WWT: 679
 CONSIGNED BY HUDSON HINES

VPI FREE LUNCH 708T
FINK 9261 OF 5533 FL EM939843
 FINK PERFECTION 5533 7738 GS
 MEAD GRIDMAKER 1224
MEAD MISS CROCUS K178 F1138398
 PF MISS CROCUS 7004 P

LT RIO BLANCO 1234 P
 VPI MISS DUCHESS 404 P
 FINK GOLD STANDARD 0153
 FINK PERFECTION 7738 248 GM ET
 M6 GRID MAKER 104 PET
 HPF MS EXLIR 202 P
 KC PUREPOWER T51 POLLED
 SAC MISS HESTER

CE	BW	WW	YW	MILK	MCE	MTL	SC	CW	REA	FAT	MARB	TSI
14.9	-1.5	70	108	23	12.8	57	0.6	28	0.55	0.015	0.42	282

29A: Sells with 1/2% Brangus Heifer calf # 163M, born 11/18/25, bw 71, sired by Brangus bull, WAT 468E17PFTSEEKER 33K2. PE from 12/28/25 to 5/15/26 to Brangus, MGB Never Surrender 209613, IBBA 10555556. Big, functional cow with a super sharp cross calf at side, will make a great recip down the road. This cross works well and cow is certainly good for using in a straight Charolais program.



RDK DELILAH VEDVEI 512P
 SELLS AS LOT 31



RDK PAM DELILIAH 513P
 SELLS AS LOT 32

30

TURNER 428 H207 ET

EF1331767 | H207 | 10/5/2020 | POLLED | BWT: 80
 CONSIGNED BY HUDSON HINES

LT LEDGER 0332 P
ACE-ORR LOCK N LOAD 243P M836295
 ORR'S MS PETUNIA 941P
 VPI FREE LUNCH 708T
FINK LADY 428 4945 FL EF1198086
 FINKS LADY 4945 2286 9108

LT BLUEGRASS 4017 P
 LT BRENDA 6120 PLD
 ACE-ORR MAKERS MARK 689
 ORR'S MS PETUNIA 0054 ET
 LT RIO BLANCO 1234 P
 VPI MISS DUCHESS 404 P
 LT UNLIMITED EASE 9108
 FINKS LADY 2286 4X6066ET

CE	BW	WW	YW	MILK	MCE	MTL	SC	CW	REA	FAT	MARB	TSI
14	-2.5	65	126	19	13.9	51	1.9	32	0.58	0.028	0.38	285

30A: Sells with 1/2% Brangus Charolais bull calf # 207P, born 1/30/26, bw 82, sired by Brangus bull, WAT 468E17PFTSEEKER 33K2. PE from 12/28/25 to 5/15/26 to Brangus, MGB Never Surrender 209613. Calf at side will sure have a great payday going towards purchase of this cow! These cows are fertile and can raise big calves. Would be excellent for a straight Charolais program.

31

RDK DELILAH VEDVEI 512P

F1363023 | K512 | 11/14/2024 | POLLED | BWT: 89
 CONSIGNED BY HUDSON HINES

RDK SAMSON 523P
SF SAMSON 924P M936810
 PJ SUSIE 937 P
 RDK SAMSON 523P
SF MISS REBECCA DELILIAH 706P F1253850
 SF MISS FLASH 316 P

RDK SAMSON 815 P
 RDK MARYT 503 P
 BM FIRST CLASS S6148
 PJ SUSIE 215 P
 RDK SAMSON 815 P
 RDK MARYT 503 P
 CC ALABAMA FLASH 826P
 CC MISS VICKIE 907 P

CE	BW	WW	YW	MILK	MCE	MTL	SC	CW	REA	FAT	MARB	TSI
10.6	0.4	65	124	19	14.2	52	0.9	24	0.73	-0.014	0.08	267

Sells Open. This complete heifer has style, abundant volume and muscling with a high degree of femininity. With balanced numbers she is a sure hit maternally. Her dam sold in the 2025 sale to Porter Henry, AL. Her dam also produced 5 calves 12/19; 12/20; 12/21; 12/23; and 11/24 so there is a great deal of fertility in the family! She has sisters in the Louallen Farms, AL., Bradford, and Keahey herds. If you like them functional & pretty, this one works!

32

RDK PAM DELILIAH 513P

F1363058 | K513 | 11/14/2024 | POLLED | BWT: 75
 CONSIGNED BY HUDSON HINES

WCR SIR PRIME CUT 637 ET P
WCR PRIMED 1132 P M959181
 WCR MS TANK 9236 TW P
 SF LEDGER 531P
SF DELILIAH JOAN 213P F1337393
 SF MISS REBECCA DELILIAH 704P

WCR PRIME CUT 764 PLD
 WCR MS DESIGN 201 P
 DC/CRJ TANK E108 P
 WCR MS COUNTY LINE 7300 P
 LT LEDGER 0332 P
 HEP MISS JOAN 2Y
 RDK SAMSON 523P
 SF MISS MAGNUM 622 P

CE	BW	WW	YW	MILK	MCE	MTL	SC	CW	REA	FAT	MARB	TSI
16	-2.5	65	117	22	11.5	55	1	27	0.59	0.032	0.14	269

Sells Open. Powerful heifer in scope and size with tremendous thickness that blends into a very feminine brood cow prospect! Light birth wt with balanced numbers and marbling ability with Prime Cut lineage. Her dam calved before 2-Years of age, on 11/24 and 12/25. 513 was purchased out of the 2025 sale showing excellent fortitude about how she would develop and develop she did into a magnificent individual!

33

CB ROYAL LADY SAMSON 534

F1365700 | B534 | 11/30/2024 | POLLED | BWT: 70

CONSIGNED BY HUDSON HINES

WDZ FRONT RANGE 602 P
HEART-J ROYAL RANGE 1743 M960235
 HEART-J ROYAL 7443

RDK SAMSON 523P
CB LADY SAMSON F1307726
 LADY BROOK 418

CCC WC RESOURCE 417 P
 WDZ SKITTLES 341 P
 CD ROYCE 4093 P
 RDW MISS GENERAL M4143P
 RDK SAMSON 815 P
 RDK MARYT 503 P
 CC SIR PROFIT 101 P
 CC MISS VEDVEI 820

CE	BW	WW	YW	MILK	MCE	MTL	SC	CW	REA	FAT	MARB	TSI
12.4	-1.4	65	120	27	9.8	60	0.8	31	0.78	0.022	0.2	280

Sells Open. This classy lady is super feminine, skeletal correct, lots of volume in muscling, spring of rib and depth of rib with a strong top. Her phenotype immediately grabs your attention. A Sage brother will be a highlight in the next Bull sale for Keahey! Although she is out of a different sire than the others, the influence of Samson genetics is so strong that the uniformity of these heifers is awesome! Big questions are how you breed her to advance the genetics!



CB ROYAL LADY SAMSON 534
 SELLS AS LOT 33

34

PC MISS FULL TILT 412

F1368539 | 412 | 7/27/2024 | POLLED | BWT: 61 | WWT: 703

CONSIGNED BY HUDSON HINES



RENN FULL RUSH 906G
RENN FULL TILT 2007 M975129
 RENN WOLF WHISTLE 007H

M6 REMEDY 1803 ET
PC MS REMEDY 1137P F1330864
 PC MS COOL REP 620 P

LT RUSHMORE 8060 PLD
 BAR S SWEETHEART 2003
 M6 BELLS & WHISTLES 258 P
 M6 NEW GERMAINE 1157 P ET
 LT RUSHMORE 8060 PLD
 M6/ROR MS JEWEL'S BELL 556 P
 M6 COOL REP 8108 ET
 BARA MS LEADER 21R

CE	BW	WW	YW	MILK	MCE	MTL	SC	CW	REA	FAT	MARB	TSI
14.1	-3.8	70	115	31	8.2	66	1	27	0.96	0.008	0.12	277

Sells Open. Talk about a brood cow, 412 is a marvelous blend of top bloodlines that includes a strong influence of M6 genetics that also traces back to Cigar and Cobb genetics. She is so powerful in construction of her middle dimensions, width of thickness, and excellent bone, and yet retains a classic brood cow look! This heifer should be on everyone's list to evaluate! Lot of family fertility, 620 had 6 natural calves and Ms Leader had 7 natural calves!



PC MISS FULL TILT 412
 SELLS AS LOT 34

35

DESCO-MY MS CHIEF 211 P-ET

EF1319158 | 211 | 3/6/2022 | HORNED | BWT: 93 | WWT: 701

CONSIGNED BY DAL-DAV CHAROLAIS

ELDER'S BLACKJACK 788B
WCR MASTER CHIEF 037 P M939613
 WCR MS PRIME CUT 852 P

OW LEAD TIME 6294 PLD
DESCO MS LEAD TIME 013 F1295709
 DESCO DACIA 601 P ET

GERRARD PASTOR 35Z
 SVY STARSTRUCK 8X
 WCR SIR PRIME CUT 637 ET P
 WCR MS KINGSBURY 684 P
 FF ABOUT TIME Y07
 OW MISS SANDCREEK 3031 PLD
 LT REWARD 2348 PLD
 DESCO OD DUKE DUANNE 213 P

CE	BW	WW	YW	MILK	MCE	MTL	SC	CW	REA	FAT	MARB	TSI
14.8	-3	64	122	36	12	68	0.9	26	0.79	0.015	0.11	272

35A: Pld heifer calf # N60, born 9/25/25, bw 74, sired by RDK Sir Samson 037, "Christmas". Bred A-I on 12/1/25 to RDK Sir Samson 037 P, and PE from 12/24/25 to 1/21/26 to SCF New Standard 463. M1015744. This could be one of the best cows in the sale! Just judge the N60calf at side! She ranks in the top 20% YW, 5% Milk, 7% MTL, 30% REA and TSI. Traces to Desco's great donor, Duke Duanne 243P, that produced 55 recorded calves. What a factory here!



WCR MASTER CHIEF 037 P
 SIRE OF LOT 35



DDC CHIEF JULIET M61 P
SELLS AS LOT 36

36

DDC CHIEF JULIET M61 P



F1356348 | M61 | 2/2/2024 | POLLED | BWT: 78 | WWT: 603

CONSIGNED BY DAL-DAV CHAROLAIS

CCC TELEPHONE ROMEO 9023 P
RENN COWBOY ROMEO 1505 M959839
RENN UPTOWN GIRL 5805C

WCR MASTER CHIEF 037 P
DESCO-MY MS CHIEF 211 P-ET EF1319158
DESCO MS LEAD TIME 013

WC RUSH HOUR 6114 P ET
WC CCC SWEETHEART 6103 P ET
HCR PATRIARCH 2502 PLD
SCR MISS MCHENRY A3805
ELDER'S BLACKJACK 788B
WCR MS PRIME CUT 852 P
OW LEAD TIME 6294 PLD
DESCO DACIA 601 P ET

CE	BW	WW	YW	MILK	MCE	MTL	SC	CW	REA	FAT	MARB	TSI
16.4	-3.8	65	121	33	11.6	66	1.6	25	0.66	0.026	0.25	273

36A: Pld heifer calf # N67, born 12/1/25, bw 65, sired by WCR Primed 1132 P, M959181. Observed bred on 2/6/26 to RDK Jefferson 504P, M1005867 and PE to Jefferson from 1/20/26 to 3/30/26. Another tremendous Cow Factory as you evaluate the calf at side. Big, stout heifer shows her performance ability from parents and plenty of milk from mother! M61 ranks in the top 10% for CE and Milk, 15% for BW, MTL, and SC, & 20% Marb EPDs. Jefferson is Awesome!

37

DDC JEWEL L02

F1350372 | L02 | 9/6/2023 | POLLED | BWT: 78 | WWT: 657

CONSIGNED BY DAL-DAV CHAROLAIS

RDK SAMSON 523P
RDK SIR SAMSON 037P M932561
DESCO MS SUNDANCE 615 P ET

WCR SIR COUNTYLINE 551 P
DDC ANNALISE F02 F1260414
DDC MS JEWEL 318P

RDK SAMSON 815 P
RDK MARY T 503 P
LT SUNDANCE 2251 PLD
DESCO OD DUKE DUANNE 213 P
WCR COUNTY LINE 3132 P
WCR MS BIG BEN 318 P
OAKDALE DUKE 9003P
SRC S02 RUBY V45

CE	BW	WW	YW	MILK	MCE	MTL	SC	CW	REA	FAT	MARB	TSI
15.7	-1.9	78	136	31	14.8	70	1.3	26	0.72	0	0.14	271

37A: Pld heifer calf # N01, born 8/6/25, bw 60, sired by WCR Primed 1132 P. Bred A-I on 12/11/25 to Heart J Royal Range 1743 and PE from 12/24/25 to 1/21/26 to SCF New Standard 463. These Samson 037 daughters are going to become legends in the breed. They do everything in productivity, performance, and maternal. They have the added volume for easy-fleshing ability with good quality udders! Ranks in top 4% WWV, 6% YW, 20% Milk, 4% MTL, 45% Marb, and 30% TSI.

38

DDC BETTY K03 P

F1346519 | DDCK03 | 9/13/2022 | POLLED | BWT: 87 | WWT: 569

CONSIGNED BY DAL-DAV CHAROLAIS

RDK SAMSON 523P
RDK SIR SAMSON 037P M932561
DESCO MS SUNDANCE 615 P ET

CWC BIG SPLASH X37
DDC BEULAH A10 F1175076
DDC BETHANY V25

RDK SAMSON 815 P
RDK MARY T 503 P
LT SUNDANCE 2251 PLD
DESCO OD DUKE DUANNE 213 P
CWC MR WIND U833
CWC BELL U809
SR/NC FIELD REP 2158 P ET
RVW BETSY 383 P

CE	BW	WW	YW	MILK	MCE	MTL	SC	CW	REA	FAT	MARB	TSI
10.3	-0.3	71	139	27	11.4	63	1.4	28	0.81	-0.002	0.09	273

38A: Pld heifer calf # N19, born 9/16/25, bw 75, sired by DC/CJC Sage K1175 P. A-I bred 12/1/25 to DC/CJC Sage K1175, PE from 12/13/25 to 1/2/26 to SCF Magnum 325, M1016472. Magnum is an LT Atlas son bred by Bonackers, MO. These Sage calve are awesome, extremely thick, stout, and very growth oriented! His paternal granddam was a Pick of DeBruycker's herd! Betty has calved on time as a two, 10/24, and now 9/25. In her prime production years!



DDC BETTY K03 P
SELLS AS LOT 38

39

DDC SAGE ANNA M05

F1368161 | DDCM05 | 9/11/2024 | POLLED | BWT: 81 | WWT: 603

CONSIGNED BY DAL-DAV CHAROLAIS

DC/MD SHARKSON H1359
DC/CJC SAGE K1175 M982947
 DC/CJC MS CUBAN F3012
 WCR SIR COUNTYLINE 551 P
DDC ANNALISE F02 F1260414
 DDC MS JEWEL 318P

DC/MD SHARK F1366 P
 DC/MD MS LEDZENIII F1380
 MD CUBAN B3012
 CJC MS PRESIDENT W3041
 WCR COUNTY LINE 3132 P
 WCR MS BIG BEN 318 P
 OAKDALE DUKE 9003P
 SRC S02 RUBY V45

CE	BW	WW	YW	MILK	MCE	MTL	SC	CW	REA	FAT	MARB	TSI
11.1	0.7	81	133	27	10.4	67	1.3	27	0.86	-0.008	0.02	268

Bred A-I on 11/18/25 to RDK Smokester 1901 P ET, and PE from 12/13/25 to 1/21/26 to SF New Standard 463, M1015744. Very impressive, thick, high-volumed, young coming first calf heifer with a lifetime of production ability ahead. Her dam, F02 has a very enviable CI of 1/21; 12/21; 11/22; 9/23; 9/24; and 9/25, that's fertility and greatly increases profit picture! M05 ranks in the top 7% WW, 20% YW, 35% Milk, 15% MTL, and 30% REA for EPDs.



DC/CJC SAGE K1175
SIRE OF LOT 39

40

DDC LINDA L04

F1350375 | L04 | 9/9/2023 | POLLED | BWT: 81 | WWT: 582

CONSIGNED BY DAL-DAV CHAROLAIS

RDK SAMSON 523P
RDK SIR SAMSON 037P M932561
 DESCO MS SUNDANCE 615 P ET
 WCR SIR COUNTYLINE 551 P
DDC RUBY LIN H12 F1318771
 DDC DF RUBY Z22

RDK SAMSON 815 P
 RDK MARY T 503 P
 LT SUNDANCE 2251 PLD
 DESCO OD DUKE DUANNE 213 P
 WCR COUNTY LINE 3132 P
 WCR MS BIG BEN 318 P
 COOLEY ROYCE 1107T39
 SRC S02 RUBY V45

CE	BW	WW	YW	MILK	MCE	MTL	SC	CW	REA	FAT	MARB	TSI
12.2	0.1	71	135	27	13.2	63	1.3	28	0.73	0.004	0.17	275

Sells bred A-I on 12/11/25 to Heart-J Royal Range 1743 and PE from 12/19/25 to 1/21/26 to SCF New Standard 463. Ranks in the top 15% WW, 7% YW, 30% Milk, 20% MTL, 25% CW 35% Marb, and 20% TSI. Christmas daughters are making fantastic brood cows. They have great udder quality and size, good overall dimensions, correctness, very feminine, yet possess plenty of muscling and eye-appeal! Their numbers are very desirable and proven in the field!

41

DDC MOLLY SAMSON L22

F1361999 | L22 | 10/8/2023 | POLLED | BWT: 79 | WWT: 506

CONSIGNED BY DAL-DAV CHAROLAIS

RDK SAMSON 523P
RDK SIR SAMSON 037P M932561
 DESCO MS SUNDANCE 615 P ET
 RDK SIR DUKE 704P
SF MS MOLLY SUE 930P F1288157
 SF MISS REBECCA SUE 711P

RDK SAMSON 815 P
 RDK MARY T 503 P
 LT SUNDANCE 2251 PLD
 DESCO OD DUKE DUANNE 213 P
 WCR SIR DUKE 0267
 SF MISS BLUE BREEZE 417P
 J&PABC9BUSTER 2
 PJ SUSIE 937 P

CE	BW	WW	YW	MILK	MCE	MTL	SC	CW	REA	FAT	MARB	TSI
10.9	-0.1	63	120	26	12.5	57	1.1	29	0.77	-0.005	0.11	277

Sells bred A-I on 12/10/25 and PE from 12/24/25 to 1/21/26 to SCF New Standard 463, M1015744. Molly calved right at 2-years of age and her dam, 930P has had 4 calves, three sired by 037, "Christmas". That blend has been so awesome in producing functional, profitable cattle, there was no need to change what is working. She ranks in the top 25% YW, 40% for both Milk and MTL, 25% CW, 35% REA, and 20% TSI, (277). Traces back to the great Compton sire, 0267!

42

SF REBECCA DELILAH 37P

RF716718 | SF37 | 11/26/2023 | POLLED | BWT: 77 | WWT: 731

CONSIGNED BY DAL-DAV CHAROLAIS

RDK SAMSON 523P
RDK SIR SAMSON 037P M932561
 DESCO MS SUNDANCE 615 P ET
 CC ALABAMA FLASH 826P
SF MISS REBECCA 215 P RF706879
 SF MISS MAGNUM 423 P TW

RDK SAMSON 815 P
 RDK MARY T 503 P
 LT SUNDANCE 2251 PLD
 DESCO OD DUKE DUANNE 213 P
 MV MR FLASH 500 P
 MV MISS ALABAMA 355 P
 WCR SIR TRADIT 9913 ET P
 SF 19

CE	BW	WW	YW	MILK	MCE	MTL	SC	CW	REA	FAT	MARB	TSI
14.7	-2.2	57	110	25	14.9	54	1	21	0.55	-0.005	0.14	264

42A: Pld heifer # P49, born 3/26/26, bw 60, sired by WCR Primed 1132 P. WOW, talk about a good-looking brood cow, 37P fits every category! Good size, correctness, high femininity excellent udder quality and size, and super disposition. This isn't unusual for 037, "Christmas daughters"! The majority are going to enhance your herd with absolute quality, prolific, and profitable. This cow is a 15/16% Charolais and all her calves will be purebreds.



SF REBECCA DELILAH 37P
SELLS AS LOT 42



RDK ABIGAIL ASHTON 140P
SELLS AS LOT 43

43

RDK ABIGAIL ASHTON 140P

F1302056 | K140 | 1/5/2021 | POLLED | BWT: 80 | WWT: 728

CONSIGNED BY DAL-DAV CHAROLAIS

WCR SIR COUNTYLINE 551 P
SF SIR AMOS 716P M905553
 WEAVERS COOL BETSY 1534
 RDK SAMSON 523P
RDK MISS DELILIAH L 812P F1253619
 JRA SERIOUS MISS Z17

WCR COUNTY LINE 3132 P
 WCR MS BIG BEN 318 P
 M6 COOL WIND 1140 P ET
 WEAVERS BLUE BETSY 1234
 RDK SAMSON 815 P
 RDK MARYT 503 P
 HEP SERIOUS BUSINESS 5ET
 KC MISS MAC 1010 POLLED

CE	BW	WW	YW	MILK	MCE	MTL	SC	CW	REA	FAT	MARB	TSI
11.9	0	61	105	27	12.1	57	0.7	22	0.68	-0.007	0.1	264

Bred A-I on 12/1/25 to DC/CJC Sage K1175, PE from 12/24/25 to 1/21/26 to SCF New Standard 463. A large framed, deep bodied cow with strong maternal ability blended with performance genetics. She just weaned a big stout fall 2025 bull calf that will definitely be in a future bull sale here. Good calving ease with a 70 lbs bw and top ranking of 35% in both Milk and MTL. This is the kind of brood cows pay the bills, year after year without pampering!



RDK MS ZELLA ABIGAIL 137P
SELLS AS LOT 44

44

RDK MS ZELLA ABIGAIL 137P

F1302044 | K137 | 12/19/2020 | POLLED | BWT: 89 | WWT: 640

CONSIGNED BY DAL-DAV CHAROLAIS

WCR SIR COUNTYLINE 551 P
SF SIR AMOS 716P M905553
 WEAVERS COOL BETSY 1534
 RDK SAMSON 523P
SF REBECCA DELILIAH TW 724P F1253858
 HEP MISS JOAN 29U

WCR COUNTY LINE 3132 P
 WCR MS BIG BEN 318 P
 M6 COOL WIND 1140 P ET
 WEAVERS BLUE BETSY 1234
 RDK SAMSON 815 P
 RDK MARYT 503 P
 SC SHADOWBROOK 484 ET
 HEP MISS JOAN 80P

CE	BW	WW	YW	MILK	MCE	MTL	SC	CW	REA	FAT	MARB	TSI
8.2	1.9	71	125	29	10.2	65	0.9	30	0.79	-0.005	0.09	272

44A: Pld heifer calf # N57, born 9/12/25, bw 75, sired by RDK Samson 037 P. Bred A-I on 12/1/25 to DC/CJC Sage K1175, PE from 12/24/25 to 1/21/26 to SCF New Standard 463. This is what a productive pair should look like. A big stout cow that put everything into her calf and did it super well! Fertility abounds with a CI of 11/22; 10/23; 9/24; and 9/25 showing what a profitable cow should produce! N57 heifer calf will be an awesome replacement heifer!



CB LADY SAMSON 422
SELLS AS LOT 45

45

CB LADY SAMSON 422

F1349583 | B422 | 11/26/2023 | POLLED | BWT: 83 | WWT: 541

CONSIGNED BY DAL-DAV CHAROLAIS

RDK SAMSON 523P
SF SAMSON 924P M936810
 PJ SUSIE 937 P
 WCR SIR COUNTYLINE 551 P
SF ANNIE REBECCA 811P F1272686
 SF MISS FLASH 311 P

RDK SAMSON 815 P
 RDK MARYT 503 P
 BM FIRST CLASS S6148
 PJ SUSIE 215 P
 WCR COUNTY LINE 3132 P
 WCR MS BIG BEN 318 P
 CC ALABAMA FLASH 826P
 SF MISS BECK 911 P

CE	BW	WW	YW	MILK	MCE	MTL	SC	CW	REA	FAT	MARB	TSI
8.8	1.4	73	131	20	11.3	56	1	27	0.76	-0.007	0.07	268

45A: Pld heifer calf # P48, born 3/18/26, bw 83, sired by WCR Primed 1132 P. This good milking cow can raise a big stout calf with udder quality and size she exhibits! A long-bodied, very feminine cow, with strong top and great lines. She also ranks well, being in the top 10% for both WW and YW40% MTL, 30% CW, 35% REA, and 35% TSI Another good solid functional cow that is productive and profitable.

46 DESCO-MARLI DUANNE 308 P ET PAF

EF1342875 | 308 | 2/26/2023 | POLLED | BWT: 77 | WWT: 621

CONSIGNED BY DESCO CHAROLAIS

ELDER'S BLACKJACK 788B

GERRARD PASTOR 35Z

WCR MASTER CHIEF 037 P *M939613*

SVY STARSTRUCK 8X

WCR MS PRIME CUT 852 P

WCR SIR PRIME CUT 637 ET P

WCR MS KINGSBURY 684 P

OW LEAD TIME 6294 PLD

FF ABOUT TIME Y07

DESCO MS LEAD TIME 013 *F1295709*

OW MISS SANDCREEK 3031 PLD

DESCO DACIA 601 P ET

LT REWARD 2348 PLD

DESCO OD DUKE DUANNE 213 P

CE	BW	WW	YW	MILK	MCE	MTL	SC	CW	REA	FAT	MARB	TSI
9.1	0.1	73	136	32	7.4	68	1.2	29	0.65	0.023	0.02	261

DUE 8/15/26 with heifer calf sired by DESCO Buckshot 416 PP ET, EM1000906.

Buckshot is the \$18,500 top selling lot to Select Sires, This cow is an outcross blend going back to the very prolific HBR Magnum 850 cow that produced many herd sires for Roger's Bar HR. This cow family have been a foot improver and they are easy keepers! She ranks in top 10% WW, 6% YW, 15% Milk, 7% MTL, 25% CW for EPDs. She is a full sib to Lot 35. Her dam has had 7 calves!



DESCO-MARLI DUANNE 308 P ET
SELLS AS LOT 46

47 DESCO MISS TRADITION 136 PLD PAF

EF1321609 | 136 | 9/25/2021 | POLLED | BWT: 93 | WWT: 587

CONSIGNED BY DESCO CHAROLAIS

M6 NEW STANDARD 842 P ET

LT RIO BRAVO 3181 P

ABJR NEW HANK 595 P *M875188*

M6 MS GRID MAKER 2175 ET

ABJR MISS HANK 1148 P

BJR HANK 984 P

BJR MISS VALUE 720 ET P

LT BLUE MOUNTAIN 1041 PLD

LT BLUE VALUE 7903 ET

VPI MISS TRADITION 321A *F1171262*

LT GRACIE 9007 POLLED

VPI MISS TRADITION 011X

VPI FREE LUNCH 708T

VPI MISS TRADITION 632S P

CE	BW	WW	YW	MILK	MCE	MTL	SC	CW	REA	FAT	MARB	TSI
11.4	-1.3	78	142	26	10.4	65	2.1	41	0.88	-0.005	0.38	307

DUE 8/25/26 with Heifer calf from mating to DCR Mr Lexington L354, M990980.

We have flushed this cow 8 times and she has averaged 9 viable embryos per flush. Her 2024 son sold for \$9,000.00. She has 16 of 17 EPD traits above average with 6 in the top 10% of the breed! Most of the others are in the top 25% of breed. She has been a favorite for both her phenotype and temperament. Lexington ranks in the top 1% for WW, YW, CW, REA, Marb, and TSI (367) and top 3% MTL and 2% Docility.



ABJR NEW HANK 595 P
SIRE OF LOT 47

SELLING 3 IVF EMBRYOS

48 NGC CHECKLIST 406M X DCR MS SILVER LED F136

CONSIGNED BY FOUR J FARMS

NGC CAPITALIST 118J ET

LT CITATION 5228 PLD

NGC CHECKLIST 406M *M1003767*

M6 NEW GERMAINE 599 P ET

NGC JACLYN 222K

KC JACK 0891P

NGC CARALYN 919G ET

WCF MR SILVER GUN 467

IQCR SILVER GUN Y31P

DCR MS SILVER LED F136 *F1266938*

WCF MISS FASTTRACK 012

DCR MS LEDGER C43

LT LEDGER 0332 P

JCH MS WESTERN EDGE S3

CE	BW	WW	YW	MILK	MCE	MTL	SC	CW	REA	FAT	MARB	TSI
11	-0.9	83	161	30	11.5	71	1.9	52	1.085	0.019	0.23	319

Selling 3-IVF Embryos from the following mating: NGC Checklist x DCR Ms

Silver Led F136. F136 has generated over \$100,000 revenue with her offspring. She is the dam of the \$48,000 ABS sire, JMAR Jefferson 8M11 and the \$31,750, JMAR Joshua owned by L.G. Herndon Farms, GA. Checklist topped out at \$215,000 going to Stabel's in KS., Cody Runft, Schnuelle, and North Grove the breeder. He ranks in the top 3% CE, YW, and MTL, 15% BW and WW, 4% for Milk, CW, and REA, top 2% Marb, and 1% TSI (328). A power-packed opportunity!



DCR MS SILVER LED F136
DONOR DAM OF LOT 48



NGC CHECKLIST 406M
SIRE OF LOT 49

TO ALL OUR
SALE CONSIGNORS,

Thank You

FOR ANOTHER
GREAT YEAR!



FARAWAY SALLY 748L
DAM OF LOT 51

SELLING 3 IVF EMBRYOS

49

NGC CHECKLIST 406M
X FINK MISS LADY 1566 6322 GS

CONSIGNED BY FOUR J FARMS

- NGC CAPITALIST 118J ET
- NGC CHECKLIST 406M** M1003767
- NGC JACLYN 222K
- FINK GOLD STANDARD 0153
- FINK MISS LADY 1566 6322 GS** EF1315022
- FINK MISS LADY 6322 2691 FL
- LT CITATION 5228 PLD
- M6 NEW GERMAINE 599 P ET
- KC JACK 0891P
- NGC CARALYN 919G ET
- M6 NEW STANDARD 842 P ET
- FINKS MISS 25503575BUDET
- VPI FREE LUNCH 708T
- MF MISS LADY 2691 6868 NS

CE	BW	WW	YW	MILK	MCE	MTL	SC	CW	REA	FAT	MARB	TSI
16	-2.5	76	146	27	9.5	65	1.7	41	0.895	0.011	0.385	310

Selling 3-IVF Embryos from the following mating: NGC Checklist 406M x Fink Miss Lady 1566 6322 GS. Picture perfect brood cow, excellent udder quality and size, plenty of volume and depth of rib for fleshing-ease, strong top and very correct in structure! She ranks in the top 8% WW, 7% YW, 8% Udder, 10% CW, 5% Marb and TSI (292). This exciting combination can lead any herd to the top of the line in quality, performance, and profitability! Gold Standard females are renown for udder quality and the success of their offspring.

50

CGE 548 OF H52

F1382060 | 548 | 11/4/2025 | POLLED | BWT: 74

CONSIGNED BY CLAYSTRONG GENETIC ENTERPRISES

- RDK SAMSON 523P
- SF SAMSON 924P** M936810
- PJ SUSIE 937 P
- RDK PASSPORT 7914 TW
- DDC NAOMI H52** F1289107
- OHF NANCY G822 ET
- RDK SAMSON 815 P
- RDK MARY T 503 P
- BM FIRST CLASS S6148
- PJ SUSIE 215 P
- BAMBOO PASSPORT 1327
- ACE MS NANCY 9145-914-3414
- LHD CIGAR E46
- THREE TREES NANCY 9126ET

CE	BW	WW	YW	MILK	MCE	MTL	SC	CW	REA	FAT	MARB	TSI
8.4	0.6	66	118	18	11.2	51	1.1	23	0.83	-0.008	-0.05	258

Sells Open. She is one of 4 calves from her dam H52. H52 has a CI of 10/22/12/23; 1/25; and 11/25 so fertility is a proven asset in this cow family. She traces back to the great Nancy G822 cow that produced 7 calves. In fact, as you can see, she is double bred Nancy, and one of the greatest cow families in the breed. The Susie 215 was a top seller in several sale, including at Wild Indian Acres.

51

FARAWAY SALLY 49N

F1371860 | 49N | 8/24/2025 | POLLED | BWT: 64

CONSIGNED BY CLAYSTRONG GENETIC ENTERPRISES



- BHD PERSEUS B65 P
- DC/CRJ TANK E108 P** M905524
- CRJ MS ZYLEN C1587
- MCF KRATOS E600
- FARAWAY SALLY 748L** F1341474
- FARAWAY SALLY 74F
- BHD ZEUS X3041
- BHD MS ZEN Z27
- SM ZYLEN A849 S
- BHD MS TRADEMARK Z38
- M6 GRID MAKER 104 PET
- FREDS MS ULTIMATE 2158 P
- BHD ZEN X270 P
- FARAWAY SALLY

CE	BW	WW	YW	MILK	MCE	MTL	SC	CW	REA	FAT	MARB	TSI
15.4	-2.4	69	141	32	13.1	67	0.9	45	1	-0.019	0.12	314

Sells Open. Her dam, 748L, calved exactly as a 2-Year Old with 49N. Her dam, 74F has produced 6 calves, 5/20; 9/21; 10/22; 8/23; 9/24; and 9/25. Lot of fertility and productivity in the cow family. Excellent milking ability as well! Tank females have excelled in calf raising with milk and performance. 49N ranks in the top 9% YW, 15% Milk, MCE, and MLT. Top 5% CW, 9% REA, and 2% TSI (314). This should make a very outstanding broodcow!

52

FINK PERFORM 54 2324 3113

F1373554 | 54 | 9/3/2025 | POLLED

CONSIGNED BY CLAYSTRONG GENETIC ENTERPRISES

LCC 923 OF 6868 FL

FINK 3113 OF 1506 923 M992324

LCC MISS LADY1506 4295 GS

LCC 923 OF 6868 FL

FINK PERFORM 2324 9001 923 EF1338931

FINK PERFORM 9001 OF 3834 GS

VPI FREE LUNCH 708T

MF MISS LADY 6868

FINK GOLD STANDARD 0153

MF MISS LADY 4295 6868 FL

VPI FREE LUNCH 708T

MF MISS LADY 6868

FINK GOLD STANDARD 0153

FINK PERFECTION 3834 7738 FL

CE	BW	WW	YW	MILK	MCE	MTL	SC	CW	REA	FAT	MARB	TSI
12.4	-1.6	72	117	20	4.9	57	1.2	28	0.4	0.01	0.44	277

Sells Open. One of the great cow families on the bottom side, the 9001 cow is owned by Arlitt, Evans, and Little W and has produced 12 calves. She has an outstanding udder volume and quality. 54 ranks in the top 2% of breed for Marb, 35% TSI, (277), and top 25% WW for EPDs. This heifer will be line-bred to Fink's foundation 6868 donor cow. A young Fink bred female to incorporate into your herd for more carcass and marbling ability!



FINK PERFORM 2324 9001 OF 3834 GS
DAM OF LOT 52

PAYWEIGHT STARTS HERE

The power of payweight starts with a registered Charolais bull. Superior weaning weight matters in your operation, and every pound translates to profit. Rely on the Payweight Specialist to deliver more dollars per head per calf weaned. **To make a difference on your next calf crop, start with Charolais.**



Phone: 816.464.5977 • Email: info@charolaisusa.com
www.CHAROLAISUSA.com • www.POUNDSMATTER.com

CHOICE OF 5-IVF EMBRYOS OFFERED BY CLAYSTRONG GENETIC ENTERPRISES



LCC MISS LADY 0308 653 BF
DONOR DAM OF LOTS 53A-D

Selling choice of ET matings, 5-IVF Embryos from the following matings with LCC Miss Lady 0308 653 BF. Daughters are in the Greg Myers, KY, Tom Greco, KS, 2-in Brantley, FL, and a powerful bull calf in David Parket's, TN. She is a full sib to LCC Hondo 0283, a top herd sire at Fink's. And her granddam, 023 is working in the Herndon Farms herd in GA. This is a special deal so take advantage of it. She ranks in the top 20% WW, 6% YW, 15% Udder and DOC, 10% CW, 4% Marb, and 6% TSI (292).

SELLING CHOICE OF 5-IVF EMBRYOS

53A
NGC CAPITALIST 118J ET
X LCC MISS LADY 0308 653 BF

CONSIGNED BY CLAYSTRONG GENETIC ENTERPRISES

LT CITATION 5228 PLD
NGC CAPITALIST 118J ET *EM964793*
M6 NEW GERMAINE 599 P ET

ONE PENNY BLANCO FLASH 6424
LCC MISS LADY 0308 653 BF *EF1307438*
FINK MISS LADY 653 023 GS

LT SUNDANCE 2251 PLD
LT JULIE 2055 PLD
M6 NEW STANDARD 842 P ET
M6 COOL GERMAINE 1145 P ET
HCR FLASH 5074 POLLED
DOUBLE-H BOBSY 424P
FINK GOLD STANDARD 0153
FINK MISS LADY 023 BG

CE	BW	WW	YW	MILK	MCE	MTL	SC	CW	REA	FAT	MARB	TSI
12	-0.15	77	149	30	4.8	68	1.7	41	1.025	0.011	0.43	312

53A: Mating 0308 to NGC CAPITALIST 118J ET EM964793. Capitalist sold for \$220,000 and then produced a son, Checklist that sold for \$215,000. This opportunity might enable a breeder to raise quite a herd bull or a definite donor down the road. The best cost a little more but they produce much more! You can't move forward if you're sitting still! Take your herd to the next level!

SELLING CHOICE OF 5-IVF EMBRYOS

53B
DCR MR LEXINGTON L354
X LCC MISS LADY 0308 653 BF

CONSIGNED BY CLAYSTRONG GENETIC ENTERPRISES

WCF MR SILVER GUN 467
DCR MR LEXINGTON L354 *M990980*
DCR MS LENDER G394

ONE PENNY BLANCO FLASH 6424
LCC MISS LADY 0308 653 BF *EF1307438*
FINK MISS LADY 653 023 GS

IQCR SILVER GUN Y31P
WCF MISS FASTTRACK 012
NGC LENDER 404B ET
DCR MS YANKIE GIRL B458
HCR FLASH 5074 POLLED
DOUBLE-H BOBSY 424P
FINK GOLD STANDARD 0153
FINK MISS LADY 023 BG

CE	BW	WW	YW	MILK	MCE	MTL	SC	CW	REA	FAT	MARB	TSI
9	1.3	90	164	23	8.9	67	2.05	53	1.07	0.003	0.455	330

53B: Mating 0308 to DCR Lexington L354. Lexington has the highest TSI in the breed at 367 and ranks in the top 1% of 7 of the most important traits! Again, a super opportunity to move a program to the highest level! Don't watch others, take charge and move your herd!

SELLING CHOICE OF 5-IVF EMBRYOS

53c **BJR TANKFULL K92 P**
X LCC MISS LADY 0308 653 BF

CONSIGNED BY CLAYSTRONG GENETIC ENTERPRISES

DC/CRJ TANK E108 P
BJR TANKFULL K92 P M984205
ABJR MISS LEDGER 6119 P

ONE PENNY BLANCO FLASH 6424
LCC MISS LADY 0308 653 BF EF1307438
FINK MISS LADY 653 023 GS

BHD PERSEUS B65 P
CRJ MS ZYLEN C1587
LT LEDGER 0332 P
ABJR MISS NO DOUBT 278 P
HCR FLASH 5074 POLLED
DOUBLE-H BOBSY 424P
FINK GOLD STANDARD 0153
FINK MISS LADY 023 BG

CE	BW	WW	YW	MILK	MCE	MTL	SC	CW	REA	FAT	MARB	TSI
10.3	0.65	76	151	30	7.8	68	1.2	50	0.85	0.007	0.345	318

53C: Mating 0308 to BJR Tankful K92 P. A new and upcoming sire with fabulous numbers! He ranks #1 in the top TSI at 344! Also #1 in CW, Udder, and 2% in YW, MTL, and Teat, 6% in Milk, 9% REA, and 3% in Marb EPDs. Tank has been a very proven sire, and this son takes it a step above!

SELLING CHOICE OF 5-IVF EMBRYOS

53D **JMAR JUBAL 5P01**
X LCC MISS LADY 0308 653 BF

CONSIGNED BY CLAYSTRONG GENETIC ENTERPRISES

PLEASANT DAWN CHISUM 216A
JMAR JUBAL 5P01 M953191
JMAR MS AMERICA 1V08

ONE PENNY BLANCO FLASH 6424
LCC MISS LADY 0308 653 BF EF1307438
FINK MISS LADY 653 023 GS

EATONS BIG BUD 10402 POLLED
PLESANT DAWN MAGGIE 316X
VPI FREE LUNCH 708T
LCOC MS AMERICA CP046
HCR FLASH 5074 POLLED
DOUBLE-H BOBSY 424P
FINK GOLD STANDARD 0153
FINK MISS LADY 023 BG

CE	BW	WW	YW	MILK	MCE	MTL	SC	CW	REA	FAT	MARB	TSI
10.7	-1	66	128	26	6	59	1.6	35	0.59	0.022	0.305	286

53D: Mating 0308 to JMAR Jubal 5P01. A sire that does the working man's job. His calves continue to gain in popularity as the daughters come into production and the sons are so dependable. A maternal sib just sold for \$44,000, JMAR Malachi 7E04. His dam has a beautiful udder and has become a legend for her ability! Jubal calves have some of the best disposition of any bull out there!

SELLING 3 IVF EMBRYOS

54 **RBM KEYSTONE H41**
X FINK PERFECTION 9315 3833 GS PAF

CONSIGNED BY ARLITT RANCH

LT RUSHMORE 8060 PLD
RBM KEYSTONE H41 M943428
RBM JASMINE F251

FINK GOLD STANDARD 0153
FINK PERFECTION 9315 3833 GS EF1291176
FINK PERFECTION 3833 7738 FL

LT RIO BRAVO 3181 P
LT BRENDA'S EASE 3055PLD
EC BIG DEAL 979 PLD
EC JASMINE 561 PLD
M6 NEW STANDARD 842 P ET
FINKS MISS 25503575BUDET
VPI FREE LUNCH 708T
FINK PERFECTION 7738 248 GM ET

CE	BW	WW	YW	MILK	MCE	MTL	SC	CW	REA	FAT	MARB	TSI
10.5	-0.45	72	125	22	4.3	58	1.4	33	0.72	0.033	0.43	287

Selling 3-IVF Embryos from mating RBM Keystone H41 x Fink Perfection 9315 3833 GS. 9315's dam is a maternal sib to 3832 and 3834 (\$400,000 progenies sold). Fink sold a full sister to this mating in their Spring 2026 sale for \$7,500.00. She was one of the best-looking heifers in the sale! He had bought a pregnant recipient in the 2025 Sale of Excellence. This could be one of those lots that may get overlooked, but it will certainly pay the dividends to the buyer!

SELLING 3 IVF EMBRYOS

55 **WCF MR SILVER GUN 467**
X FINK LADY 0303 418 GS

CONSIGNED BY EVANS CHAROLAIS

IQCR SILVER GUN Y31P
WCF MR SILVER GUN 467 M847860
WCF MISS FASTTRACK 012

FINK GOLD STANDARD 0153
FINK LADY 0303 418 GS EF1307301
FINK LADY 418 4952 FL

LT SILVER DISTANCE 5342P
IQCR MS GUNSMOKE CHAR 6014P
WCF MR FASTTRACK 711
WCF MS EDGE 8111
M6 NEW STANDARD 842 P ET
FINKS MISS 25503575BUDET
VPI FREE LUNCH 708T
FINKS LADY 4952 2528 9108

CE	BW	WW	YW	MILK	MCE	MTL	SC	CW	REA	FAT	MARB	TSI
8.4	0.35	81	147	16	9.8	57	1.9	47.5	0.985	0.001	0.305	312

Selling 3-IVF Embryos from mating of WCF Mr Silver Gun 467 x Fink Lady 0303 418 GS. Super brood cow purchased from Fink's, starting her flush program and her first time went extremely well. She's a very deep bodied, easy-fleshing cow with fantastic udder design and volume. Her dam produced 8 calves, owned by Flaughter Farms, KY and a full sister is in Rocky Hughes herd, MS. Granddam has 16 progenies and 2 daughters owned by Frank Turner, AI 2 for Greg Myers, KY.



FINK PERFECTION 9315 3833 GS
DONOR DAM OF LOT 54



FINK LADY 0303 418 GS
DONOR DAM OF LOT 55



EATONS MISS LINDEN 00932
DONOR DAM OF LOT 56



HBR MISS AUTO PILOT 126 P
SELLS AS LOT 57



HBR LADY AUTO PILOT 20 P TW
SELLS AS LOT 58

SELLING PREGNANT RECIP

56 **WCF MR SILVER GUN 467**
X EATONS MISS LINDEN 00932

CONSIGNED BY JFS RANCH

IQCR SILVER GUN Y31P
WCF MR SILVER GUN 467 M847860
WCF MISS FASTTRACK 012

LT SILVER DISTANCE 5342P
IQCR MS GUNSMOKE CHAR 6014P
WCF MR FASTTRACK 711
WCF MS EDGE 8111

EATONS ORDER 51671 POLLED
EATONS MISS LINDEN 00932 F1301853
EATONS MISS LINDEN 30595 P

EATONS EXECUTIVE 20364
EATONS MISS FINA 01101 POLL
SCHURRTOP EATON CHOICE K717
EATONS LINDEN 11029

CE	BW	WW	YW	MILK	MCE	MTL	SC	CW	REA	FAT	MARB	TSI
3.7	1.9	90	166	28	10.7	74	1.8	50	1.11	-0.014	0.215	311

Selling a Pregnant Reipient with ET mating of WCR Mr Silver Gun 467 x Eatons Miss Linden 00932. Due October 2026. 00932 was out Pick of the Eaton herd. This beautiful, patterned cow has excellent udder, is very correct in structure with good bone, length and depth of body. A high degree of femininity sets her off from many. She ranks quite well in the top 3% WW, 1% YW, 2% Milk, 1% MTL, 15% for both CW and REA, and 25% TSI (273) Her dam has had 7 calves, and she has had 5 so lots of fertility in this package. The work is done, take her home!

57 **HBR MISS AUTO PILOT 126 P**

F1308499 | 126 | 1/21/2021 | POLLED | BWT: 68 | WWT: 421
CONSIGNED BY ROGERS BAR HR CHAROLAIS

HBR AUTO PILOT 2 P
HBR AUTO PILOT 1316 P M885981
CRF MISS MAGNUM 410 P

HBR AUTO PILOT 702 P
HBR MAGNUM 737 P
HBR EQUALIZER 402 P
HBR LADY MAGNUM 528 P ET

CC MR FLASH 306 P
CC MISS FLASH 813 P F1259080
CC SOUTHERN LADY 512

CC ALABAMA FLASH 826P
SF LADY SUE 842S
CC SUPER DUKE 844P
CC MISS RISER 883

CE	BW	WW	YW	MILK	MCE	MTL	SC	CW	REA	FAT	MARB	TSI
12.7	0	53	96	32	12.7	59						

57A: Pld heifer calf # 67P, born 1/19/26, bw 75, sired by HBR Value 748 P, M987825. PE from 2/15/26 to sale to HBR Profit 330 J, M949666. Beautiful designed feminine cow with big stout, growthy heifer replacement at side. She traces back to Buck Compton genetics on the bottom side. A very good udder structure and size with good teat placement and size. Good conformation adds value and functional capacity! Ranks in top 15% for Milk EPDs.

58 **HBR LADY AUTO PILOT 20 P TW**

F1333476 | 20K | 2/08/2022 | POLLED | BWT: 65 | WWT: 258
CONSIGNED BY ROGERS BAR HR CHAROLAIS

HBR AUTO PILOT 2 P
HBR AUTO PILOT 1016 P M885980
HBR LADY PROGRAM 673P ET

HBR AUTO PILOT 702 P
HBR MAGNUM 737 P
HBR PROGRAM 297 P
HBR LADY MAGNUM 721

HBR PROGRAM 11 P
HBR LADY PROGRAM 1526 P F1221972
VWC PROFIT W32

HBR PROGRAM 7041
HBR LADY PROFIT 806 P
HBR PROFIT 543 P
VWC DUCHESS S16

CE	BW	WW	YW	MILK	MCE	MTL	SC	CW	REA	FAT	MARB	TSI
13.3	1.3	52	94	29	16.1	55		19	0.45	0.002	0.06	253

58A: Pld heifer calf # 606 P, born 2/10/26, bw 93, sired by HBR Profit 330 J. PE from 2/15/26 to sale to HBR Profit 330 J. Sire is a paternal sib to sire of lot 57. Ranks in the top 25% for Milk EPD. Big framed cow with good udder development and teat size. The Roger cows are noted for practical production on grass and still excel in growth and performance. Probably hold the record for the most Bull Test gain contests in the nation!

59

HBR LADY BIG MACK 266 P

F1326408 | 266K | 10/16/2022 | POLLED | BWT: 75 | WWT: 510
 CONSIGNED BY ROGERS BAR HR CHAROLAIS

HBR BIG MACK 408 P ET
HBR BIG MACK 190 P M841233
 HBR LADY AUTO 077 P

 HBR CANNON 602 P
HBR LADY CANNON 352 P F1180069
 HBR LADY MAGNUM 902 P ET

HBR BIG MACK 638 P
 HBR LADY GI 207 P ET
 HEP AUTO PILOT 101H ET
 CC SOUTHERN QUEEN 482P
 HBR CANNON 2250 ET
 HBR LADY MAGNUM 850 P
 HBR MAGNUM 93 P
 HBR LADY DUKE 606 P

CE	BW	WW	YW	MILK	MCE	MTL	SC	CW	REA	FAT	MARB	TSI
13.0	0.1	63	114	32	15.3	64	0.9	28	0.64	0.012	0.05	268

59A: Pld heifer # 603 P, born 2/4/2026, bw 85, sired by HBR Value 748 P. PE from 2/15/26 to sale to HBR Profit 330 J. Value 748 is sired by Mead Keystone V020, a Rushmore grandson blended with Grid Maker genetics and double bred Auto Pilot on the bottom side. Big framed cow with a quality designed udder and teat size. Good depth of body and extra length with a high degree of femininity. Cannon family had a lot of performance and eye-appeal.



HBR LADY BIG MACK 266 P
 SELLS AS LOT 59

60

HBR LADY EASY 075 P

F1294736 | 075H | 10/11/2020 | POLLED | BWT: 98 | WWT: 586
 CONSIGNED BY ROGERS BAR HR CHAROLAIS

ACE MR DOC EASY 7113PLD
ACE-NCC-DOC EASY 355 M852775
 SHARP DUKE 408

 HBR PROGRAM 7041
HBR LADY PROGRAM 360 P F1183627
 HBR LADY BIG MACK 075 P

NWMSU DOC SILVER 362 PLD
 BJR MISS EASY PRO 5113 P
 SHARP DUKE 159 ET
 SHARP MAGNUM 917
 HBR PROGRAM 218 P
 HBR LADY PROGRAM 539P
 HBR BIG MACK 408 P ET
 HBR LADY ICON 714 P

CE	BW	WW	YW	MILK	MCE	MTL	SC	CW	REA	FAT	MARB	TSI
6.9	2.6	71	106	25	9.9	61	0.9	17	0.47	0.012	0.12	241

60A: Pld heifer calf # 601 P, born 1/26/26, bw 85, sired by HBR Big Mack 251 P, M943295. . PE from 2/15/26 to sale to HBR Profit 330 J. She ranks in the top 40% for both WW and YW, top 15% Milk, 4% MCE, 15% MTL, 30% CW, and 35% TSI. Highly maternal pedigree with Duke, Magnum, Lady Gi 207, Cannon, and performance that this herd was based on. Again, a quality udder to raise a big calf at weaning. Line-bred Mack genetics!



HBR LADY EASY 075 P
 SELLS AS LOT 60

61

DC/MD OLD GLORY N1250 P

M1023022 | N1250 | 1/30/2025 | POLLED | BWT: 80
 CONSIGNED BY JFS RANCH

DC/BHD SHAZAM G3220 PET
DC/BHD COWBOY L32 P M998007
 DC/BHD MS SHARK H3058

 DC/MD LEDGER VII F1274
DC/MD MS LEDGER VII L 1384 TW F1349683
 DC/MD MS LEDGER III G1465

DC/JDJ PEGASUS D3330 P
 BHD MS COBALT Z767
 DC/MD SHARK F1366 P
 BHD MS STERLINGS Z574
 LT LEDGER 0332 P
 MD MS PERSEUS D1296
 MD LEDGER III D1239
 MD MS DISTRICT C1356 TW

CE	BW	WW	YW	MILK	MCE	MTL	SC	CW	REA	FAT	MARB	TSI
11.2	-1.0	64	117	18	10.1	50	1.3	27	0.75	0.002	0.03	268

Selling 5-Units of Semen from DC/MD OLD GLORY N1250 P. He was the high-selling bull in the 2026 DeBruycker Bull Sale for \$57,000 for 1/2 interest.

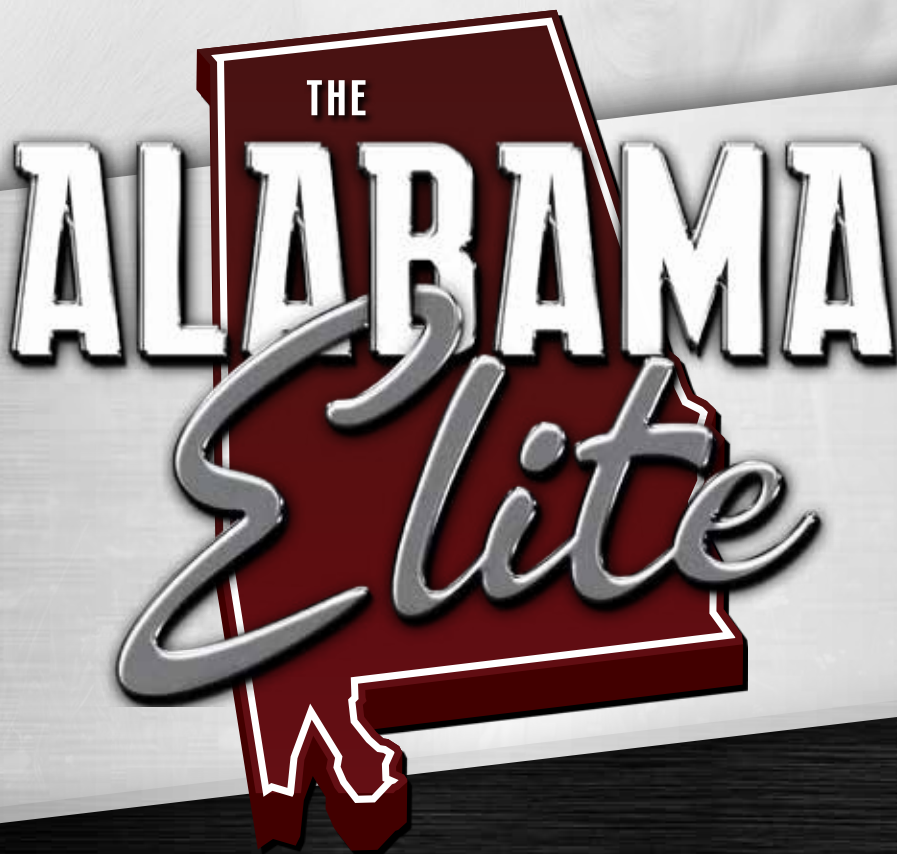


DC/MD OLD GLORY N1250 P
 SELLING 5 UNITS OF SEMEN



PRE-SORTED
FIRST CLASS
U.S. POSTAGE
PAID
SLATE GROUP

DENNIS ADAMS
P.O. BOX 1879 | LAMPASAS, TX 76550



MAY 16
2026

LETOHATCHEE
ALABAMA

CHAROLAIS BULLS, FEMALES & EMBRYOS